



biogas • natural gas • special gas



All products are
also available in
our online shop





CLEAN AIR IS OUR ENGINE

The catalogue prices stated are recommended retail prices. Offers are subject to change, prices are subject to VAT (with the exception of the reimbursement of the old catalytic converters), delivery ex works, subject to prior sale. You can always find our current sales prices in our online shop www.bhkwteile.de.



TABLE OF CONTENT

6	LATEST NEWS Foreword, SCR exhaust gas aftertreatment
34	MAN
48	SCHNELL
54	2G
62	MTU /MDE
72	MWM
86	JENBACHER
96	ACCESSORIES
110	EMISSION MEASUREMENT Measurement, Formaldehyde Quick Tester 2.0, EMI-LOG
124	OUR CONTACT PERSONS
126	INDEX

- MAN
- Schnell
- 2G
- MTU/MDE
- MWM
- Jenbacher
- Accessories

NEW YEAR, NEW REQUIREMENTS AND SOLUTIONS FROM EMISSION PARTNER

Dear engine plant operators,

Today - just in time for the Biogas Convention 2023 in Nuremberg - you are holding the 10th Emission Partner Catalogue in your hands. What once started small has become an indispensable reference work for many plant operators on products and services related to the topic of emissions from stationary engines. The new catalogue also shows how the company has changed in recent years from a supplier of catalytic converters to a full service provider, which today offers complete turnkey conversions of exhaust systems from turbochargers onwards. Emission Partner has invested massively in building up its own design department, its own service team that also installs your catalytic converters and, last but not least, in the further expansion and rationalisation of production.

The old location in Ramsloh, although expanded several times, has become too small and so a move to the new location in Strücklingen, not far from the old company, is planned for 2024. There we will be able to more than double the production area and manufacture much more efficiently.

The new building in Strücklingen was necessary because the conversion of Flex engines to SCR exhaust gas aftertreatment poses completely new challenges not only for the plant operators but also for us as suppliers. The legislator took a long time to demand the new nitrogen oxide limits for all flex engines from the first of January this year. It was already clear in 2021 that this would not be feasible. Today, almost a year after the deadline, more than half of all flex engines have not yet been converted.

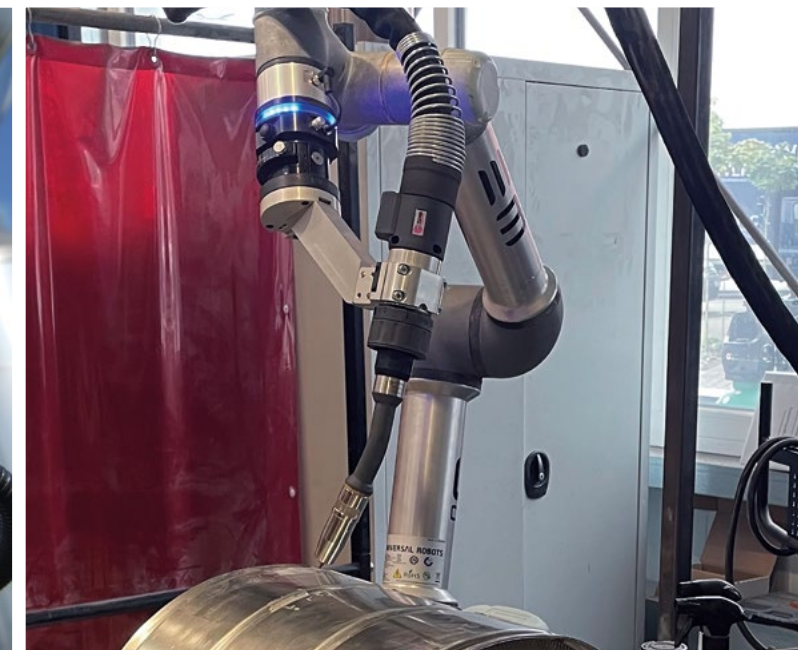
After more than 200 converted engines, Emission Partner is well positioned for this new market. With our own catalytic converter development and production, design, welding, PLC control cabinet construction and programming as well as compact catalytic converter concepts, we have managed to present a successful conversion project for every commercially available Flex CHP. The shortage of skilled workers, but also delivery problems of crucial electronic components, have meant that the projects have taken considerably longer than we could have estimated at the beginning of the year. In the end, however, it is the experience we have gained in these projects that counts. We can now use this experience for our customers.

And the good news at the end: In economically tense times with declining orders for the industry and persistent inflation, Emission Partner's catalyst prices remain stable. Only the emission measurement service had to be re-evaluated - not least because of the massive increase in documentation and monitoring costs imposed by the legislator. Secure emission measurement for your engines today for the next 3 years. There is more demand for emission measurement than there are measurement technicians.

Thank you for your loyalty.

**Sincerely
Dirk Goeman**

Managing Director of Emission Partner GmbH & Co. KG



EMISSION PARTNER – YOUR EXHAUST AFTERTREATMENT SPECIALIST

You need a new catalytic converter or have questions about the new official emission requirements? Then you too can rely on our products and services!



Safe compliance with emission requirements



100 % manufacture of the catalytic converters in our own production



Annually over 1800 emission measurements on stationary engines of all gas types



Germany-wide service for your exhaust systems



All standard catalysts available ex Factory available

Our experience = Your safety!



Many years of experience in SCR exhaust gas aftertreatment



THE FUTURE OF EXHAUST GAS AFTERTREATMENT FROM 2024

Strücklingen

Emission Partner stays in Saterland. Emission Partner plans to manufacture catalytic converters in Strücklingen in the foreseeable future.

After a successful ground-breaking ceremony in September 2022, construction work for the new company building could begin. The managing partner Dirk Goe-man, the mayor of Saterland Thomas Otto, the partner Reinhold Kurre, the district administrator of Cloppenburg Johann Wimberg, as well as Stefan Plaggenborg, managing director of the Kurre group of companies in Saterland, who are involved in the production of Emission Partner, took up the spade. In addition to a larger and optimised production area, the new building also offers space for several offices as well as more efficient delivery and collection. Four production halls are to be built on the 2.6-hectare site. What is being built on the Strücklingen industrial estate has an investment volume of five million euros.

In the meantime, we are making good progress with the construction of the headquarters in Strücklingen, so that the topping-out ceremony could take place in July 2023. The new company headquarters with 880 m² of office space and 4000 m² of production space is expected to

be ready in 2024. We hope that employees and customers can then be welcomed at the new company location in Strücklingen. Emission Partner will stay in the community and create new jobs there. Specifically, 11 new jobs can be created in the next two years, in addition to the more than 60 employees Emission Partner has in Ramsloh, in the sales office in Hanover and in Italy and the Netherlands.

We are continuing to expand our competitive advantage in the exhaust gas aftertreatment of combined heat and power plants as well as our - in Europe unique - vertical range of manufacture. For us, the construction project in Strücklingen is the most important building block for a future-proof location. We want to create attractive jobs with the people in and from the Saterland region and make Saterland known beyond its borders with visionary ideas.

For more information and exciting impressions you can also find on our Instagram channel.

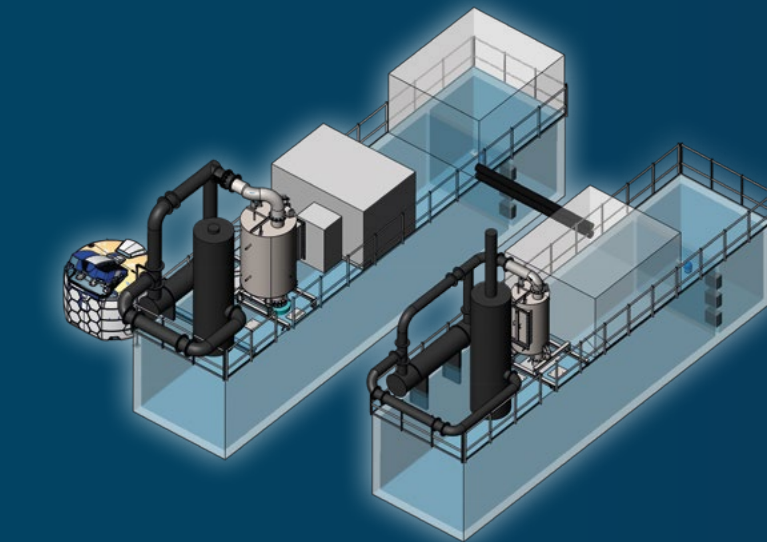


SCR EXHAUST GAS AFTERTREATMENT: OUR EXPERIENCE = YOUR SAFETY!

So far, more than 200 successfull realised retrofits on all standard engines.

With the 44th BImSchV, the exhaust gas limits and monitoring obligations for all engine operators have become significantly stricter. Thus, sooner or later, all engine operators will have to deal with emission reduction. Since 01 January 2023, all biogas-fuelled combined heat and power plants commissioned after 20 December 2018 must already comply with a reduced nitrogen oxide (NOx) limit of 0.1 g/Nm³. This can only be safely achieved with an SCR exhaust gas aftertreatment system using an aqueous urea solution (AdBlue). By 1 January 2025, all natural gas engines will also be affected by this retrofitting obligation.

To ensure the operation and economic success of your CHP plants, Emission Partner has developed a standard SCR retrofit solution for almost all engine types. The focus is on the plant-specific technical solution to meet all requirements of the 44th BImSchV. Since it is always an individual project, all interested operators are visited on site by a sales representative. With the help of a 3D scan, the existing flue gas system is digitised and interfering geometries are taken into account. Afterwards, operators receive their individual and turnkey offer. After the order is placed, a customised layout is created, which forms the basis for the further project steps.



<https://scr-flex.de/>
click here!

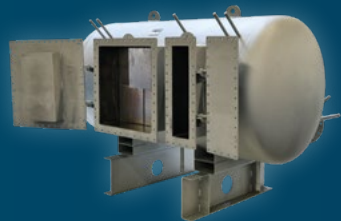


STRUCTURE AND COMPONENTS OF THE SCR EXHAUST GAS AFTERTREATMENT

Turnkey
SCR plant

The specific integration of the SCR exhaust gas purification system depends on the arrangement and design of the components in the exhaust system and on the exhaust gas temperatures. The SCR exhaust gas purification system regulates itself independently of the upstream systems. By measuring the nitrogen oxides upstream and downstream of the catalytic converter, the

amount of urea solution to be injected is calculated and dosed accordingly. Different catalyst chambers are used by Emission Partner depending on the application. Depending on the design of the catalytic converters, the reactors are available in round or square design. In the following, we present the individual components and their task.



SCR CATALYT CHAMBER

Depending on the installation situation, the reactors are available in round or square design. In the reactor, several SCR catalysts are connected in series on the input side for the reduction of NOx. For the oxidation of CO, formaldehyde (HCHO) and ammonia, a barrier catalyst is provided downstream of the SCR catalysts. All chambers are equipped with the necessary measuring nozzles and allow for easy replacement of the catalysts.



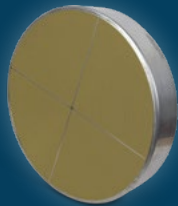
MIXING SECTION

Good mixing of the reducing agent (urea solution) with the exhaust gas is very important for optimum nitrogen oxide reduction. To ensure this, in addition to optimised injection, safe mixing and evaporation of the urea solution must be provided.

In the **EP-KKMS system**, the **mixing section** is **integrated** into the reactor.

SCR CATALYSTS

Depending on the catalyst chamber, square full extruded or round metal catalysts with a special SCR coating are used. The catalysts are characterised by high reduction rates with an optimal air-fuel ratio.



UREA NOZZLE

The urea nozzle (e.g. for AdBlue®) is characterised by an extremely high degree of atomisation at high exhaust gas temperatures, which are particularly common in combined heat and power plants. No separate cooling of the injection nozzle is necessary. Optimum atomisation is achieved through the use of a two-substance nozzle with additional use of compressed air.



COMPRESSED AIR MODULE

The compressed air module consists of an oil-free, continuously running compressor with wall bracket and a pressure tank as well as the connecting parts. The power connection of the compressor is connected to a relay in the SCR control and is thus switched when required.



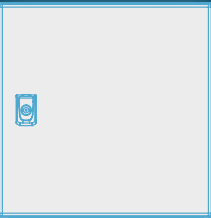
CONTROL

The SCR control unit in the control cabinet represents the central unit from which the SCR dosing system is monitored and switched. It contains all PLC modules and their power supply. The SCR control unit in the control cabinet is also the central power supply for the SCR dosing system. It is also equipped with a screen and a central power switch.



SENSOR MODULE

A large part of the sensor technology for dosing monitoring is installed in the SCR sensor module. Two pressure sensors are provided for the urea and compressed air lines. Another pressure sensor is used to monitor the operation of the catalytic converter system. Two valves switch between compressed air and metering operation.



UREA SOLUTION TANK SYSTEM (OPTIONAL)

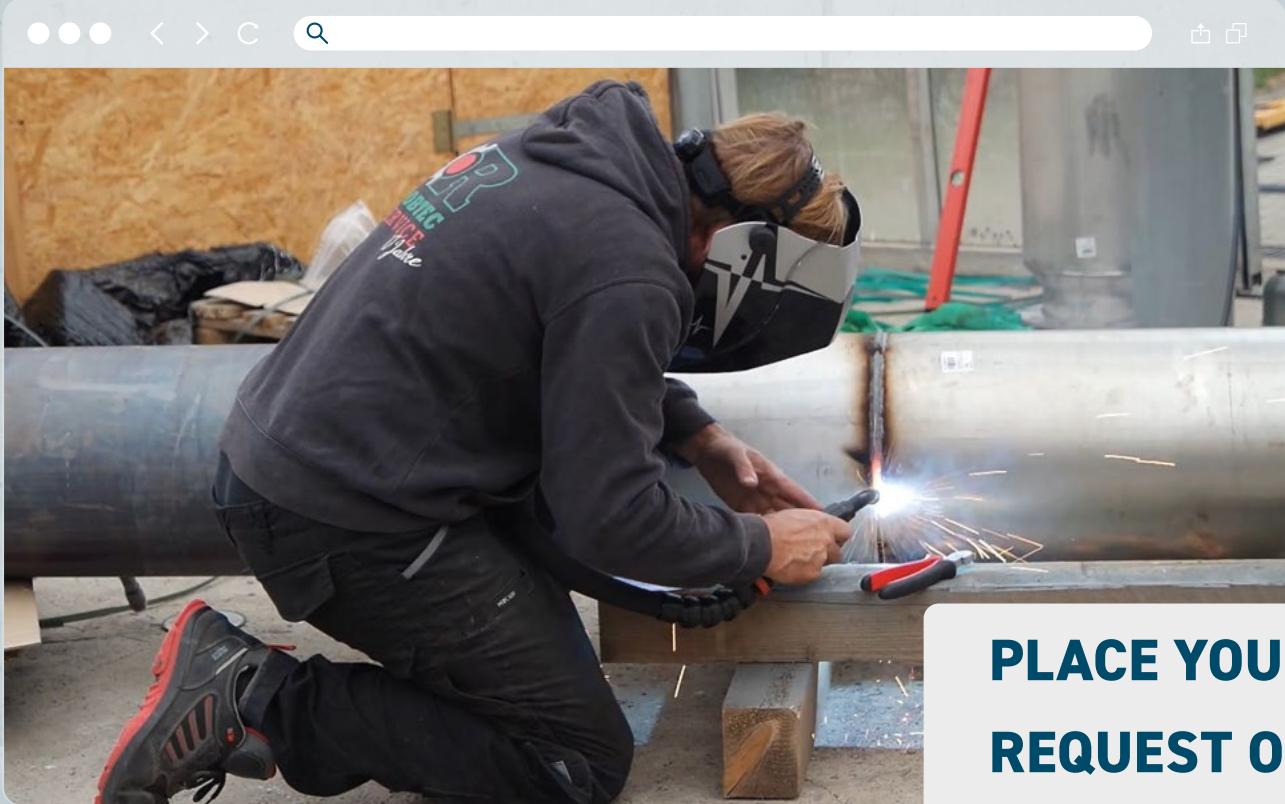
A double-walled storage tank is proposed for storing the urea solution. Together with the tank, the fuelling system consists of various components which are coordinated with each other. Optionally, an external re-fuelling system with nozzle and counter can also be supplied.



ASSEMBLY OF A SCR SYSTEM ON JENBACHER 412



click here!



**PLACE YOUR
REQUEST ON
SCR-FLEX.DE**

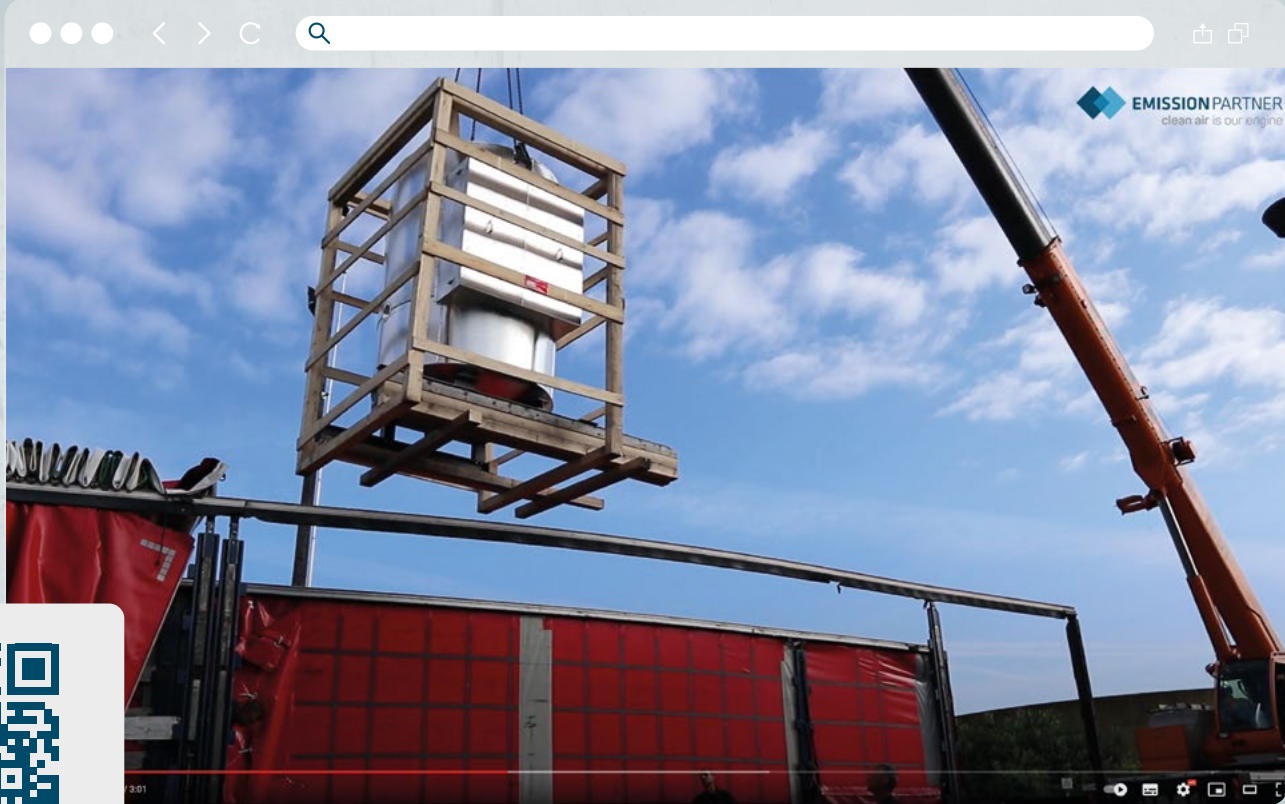


click here!

BE THERE LIVE →



click here!



REFERENCES FOR SCR RETROFITTING EXHAUST GAS AFTERTREATMENT SYSTEMS

Jenbacher 312 / 412 from AB Energy
Container placement

Jenbacher 312 / 412 from EPS
Container placement



Jenbacher 312
Building placement

Jenbacher 316 from 2G
Container placement



REFERENCES FOR SCR RETROFITTING EXHAUST GAS AFTERTREATMENT SYSTEMS

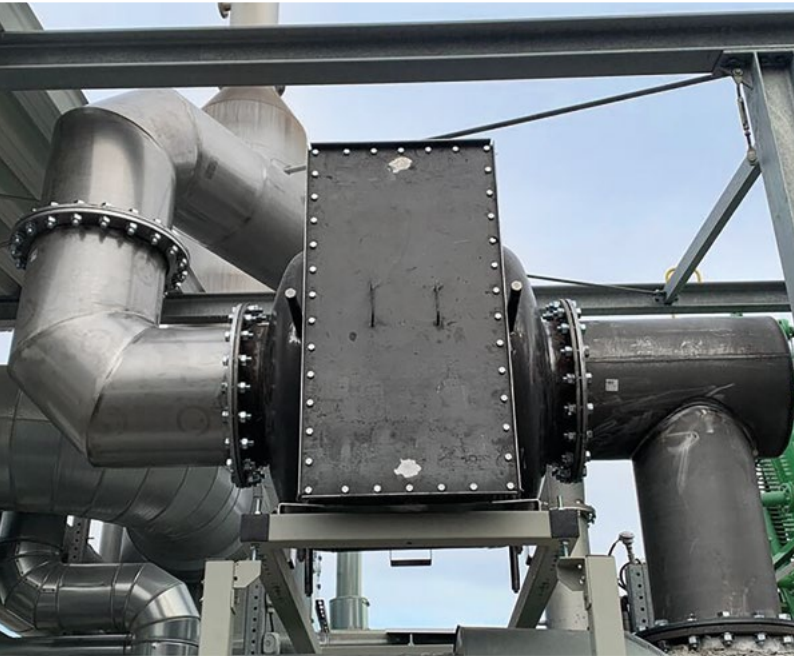
Jenbacher 320 from AB Energy
Container placement



Jenbacher 412 from 2G
Container placement



Jenbacher 420
Container placement



Jenbacher 612
Building placement



REFERENCES FOR SCR RETROFITTING EXHAUST GAS AFTERTREATMENT SYSTEMS

Avus 500+ from 2G
Container placement



MTU V12 Baureihe 4000 from Tedom
Building placement



MTU V12 Baureihe 4000 from Tedom
Container placement



MTU V16 BR4000
Container placement



REFERENCES FOR SCR RETROFITTING EXHAUST GAS AFTERTREATMENT SYSTEMS

MAN E3268 from TAB-Spelle
Container placement



Liebherr 525kW from 2G
Container placement



Schnell DC13 from Tedom
Container placement



Agenitor 408 from 2G
Container placement



The SCR exhaust system from Emission Partner is characterised by its compact design. During the design process, the focus was on simple integration of the exhaust components into the existing exhaust system.

Installation of a compact catalyst chamber with integrated mixing section, a 3 x 3 reactor for a Jenbacher 412 engine.

The special feature of the Emission Partner solution is that the mixing section for evaporation and mixing of the AdBlues is already integrated into the reactor.



SCR-CATALYSTS

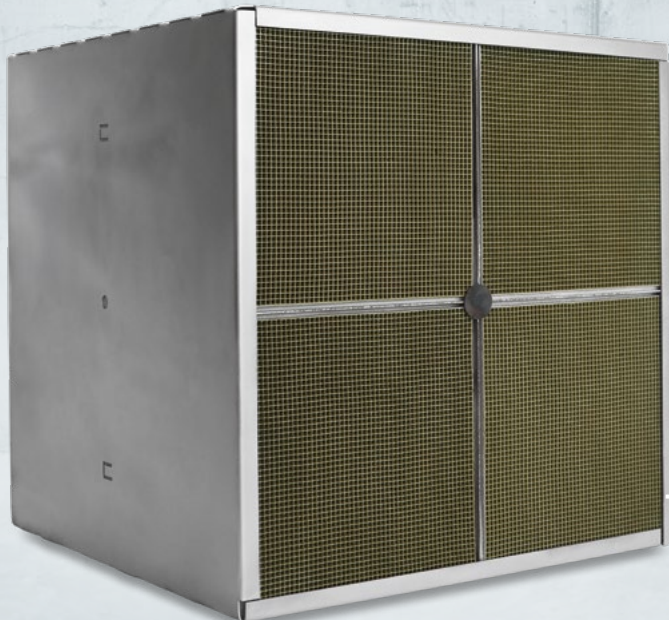
on metal baised suitable
for standard chambers



- CATALYSTS
- EP-SCR 311x311-90-2
 - EP-ALS 311x311-90-2
 - EP-AL 311x311-90-2
- ◆ catalyst metal-based
 - ◆ standard dimension
 - ◆ compact construction
 - ◆ different coatings possible

SCR-CATALYSTS

on full extrudate base suitable
for standard chambers



- CATALYSTS
- EP-SCR 2x2 150x150-300/50x50-KK
 - EP-ASC 2x2 150x150-300/50x50-KK-100
- ◆ highly porous full extrudate
 - ◆ standard dimension
 - ◆ compact construction
 - ◆ different coatings possible
 - ◆ SCR and barrier catalytic converter available

SCR-CATALYSTS

on metal baised suitable
for standard chambers



click here!



Article no.	Article name	Description	Dimension	Price
6766	EP-SCR 311x311-90-2	metal-based catalyst	frame: 315 x 315 x L96 mm matrix: 311 x 311 x L90 mm cell density: 200 cpsi	€ 405.00 / piece
1374	EP-ALS 311x311-90-2	metal-based catalyst	frame: 315 x 315 x L96 mm matrix: 311 x 311 x L90 mm cell density: 200 cpsi	€ 650.00 / piece
2611	EP-AL 311x311-90-2	metal-based catalyst	frame: 315 x 315 x L96 mm matrix: 311 x 311 x L90 mm cell density: 200 cpsi	€ 750.00 / piece

Assembly, sales and service by phone: +49 4498 92 326 - 26 or by e-mail: shop@emission-partner.de



delivery time in days



recycling (page 123)

All pirces plus VAT.



SCR-CATALYSTS

on full extrudate base suitable
for standard chambers



click here!

Article no.	Article name	Description	Dimension	Price
819	EP-SCR 2x2 150x150-300/50x50-KK	catalyst based on full extrudate	frame: 315 x 315 x L303 mm carrier: 4 Elemente 150 x 150 L300 mm cell density: 50x50 Zellen	€ 405.00 / piece
4250	EP-ASC 2x2 150x150-300/50x50-KK-100	catalyst based on full extrudate	frame: 315 x 315 x L303 mm carrier: 4 Elemente 150 x 150 L300 mm cell density: 50x50 Zellen	€ 750.00 / piece

Assembly, sales and service by phone: +49 4498 92 326 - 26 or by e-mail: shop@emission-partner.de



delivery time in days



recycling (page 123)

all prices plus VAT.

VISIT US AT THE BIOGAS CONVENTION 2023

from 12.- 14. December in Hall 08 at stand D18 in Nuremberg

Also this year you can discover novelties and well-tried technologies on our stand.
At our stand, you can discuss with the specialists from Emission Partner what these innovations mean for your CHP!

We look forward to your visit, your Emission Partner Team

Find out about the following topics:

- ◆ SCR exhaust aftertreatment:
Turnkey SCR solutions for all engines
- ◆ Catalytic converters for all common combined heat and power units: 100 % in-house production in Germany
- ◆ Formaldehyde Quick Tester 2.0
for transparent catalyst change



One waistcoat per person and only while stocks last.





MAN

TABLE OF CONTENT	
36	Catalysts for installation in exhaust gas heat exchangers
38	Catalysts for installation in the exhaust pipe
40	Catalysts for Geisberger engines
42	Catalysts for DQL catalytic chambers

MAN

CATALYSTS FOR INSTALLATION IN EXHAUST GAS HEAT EXCHANGER

MAN



20 mg / Nm³
Formaldehyde



CATALYSTS

- EP-AL 199-90-2-2.0-AWT
- EP-AL 254-120-2-2.1-AWT
- EP-AL 254-120-3-2.1-AWT
- EP-AL 304-120-2-2.1-AWT

lamellae-spring brim for optimal sealing and reduction of exhaust slip

folding handles for safe mounting

suitable for all MAN E28 Serie



click here to play
assembly video

MAN

CATALYSTS FOR INSTALLATION IN THE EXHAUST PIPE

catalysts with mounting accessoires for MAN

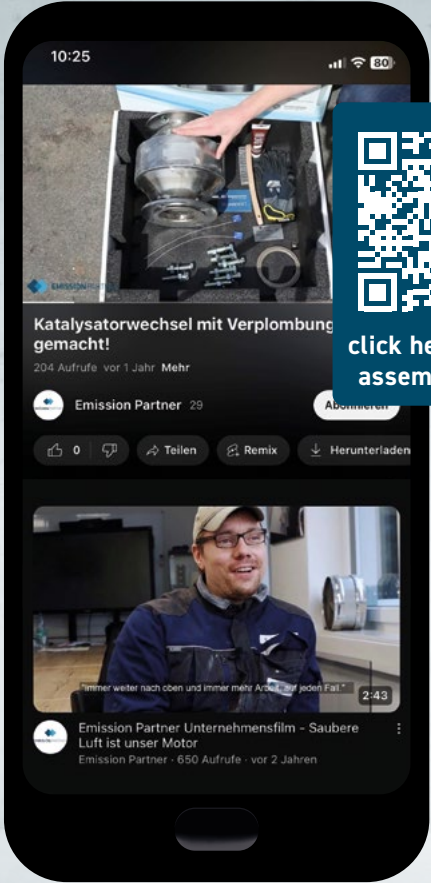


 20 mg / Nm³
Formaldehyde

CATALYSTS

EP-AL 304-120-2-2.1-
BL400-DN150LF-Uni

- ◆ use of 2 catalysts with double-flow exhaust system
- ◆ including matching accessoires
- ◆ version with loose flange for safe mounting
- ◆ suitable for all MAN E28 and E32 Serie



click here to play
assembly video

CATALYSTS

EP-AL 254-90-2-2.1-
BL300-DN100LF-Uni



- ◆ use of 2 catalysts with double-flow exhaust system
- ◆ including matching accessoires
- ◆ version with loose flange for safe mounting
- ◆ suitable for all MAN E28 Serie



CATALYSTS FOR GEISBERGER ENGINES

for installation in exhaust pipes

MAN



CATALYSTS
EP-AL 254-120-2-GB

- ◆ catalytic disc
double cone
- ◆ version with loose flange for safe mounting
- ◆ suitable for **PowerMax 190kW**

CATALYSTS FOR GEISBERGER ENGINES

for installation in exhaust pipes

MAN



CATALYSTS
EP-AL 402-120-2-GB
EP-AL 514-90-2-2.1-GB

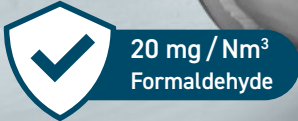
- ◆ oxidation catalyst with double flange
- ◆ compact construction
- ◆ suitable for **PowerMax up to 550kW**

20 mg / Nm³
Formaldehyde

CATALYSTS FOR DQL CATALYST CHAMBERS

universally usable

MAN

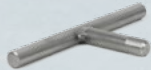


CATALYSTS

- EP-AL 216-90-2-2.1-DQL10
- EP-AL 254-90-2-2.1-DQL12
- EP-AL 288-90-2-2.1-DQL14
- EP-AL 320-90-2-2.1-DQL15
- EP-AL 362-90-2-2.1-DQL16
- EP-AL 448-90-2-2.1-DQL18

can be used in standard catalyst chambers with **insertion device** or **inspection cover**

removable T-handle for mounting



CATALYSTS FOR INSTALLATION IN EXHAUST GAS HEAT EXCHANGERS



click here!



Article no.	Article name	Description	Dimension Ø	Price	Price (incl. accessoires)
185	EP-AL 199-90-2-2.0-AWT	suitable for MAN 0836 installation in heat exchanger DN 200	203 x L96 mm	€ 995.00 / piece	€ 1,185.75 / piece
191	EP-AL 254-120-2-2.1-AWT	suitable for MAN Dreyer & Bosse 2842 and 2876 installation in heat exchanger DN 250	258 x L126 mm	€ 1,395.00 / piece	€ 1,589.75 / piece
3305	EP-AL 254-120-3-2.1-AWT	suitable for MAN Dreyer & Bosse 2848 installation in heat exchanger DN 250	258 x L126 mm	€ 1,895.00 / piece	€ 2,089.75 / piece
196	EP-AL 304-120-2-2.1-AWT	suitable for MAN 2842 and 2848 installation in heat exchanger DN 300	308 x L126 mm	€ 1,995.00 / piece	€ 2,222.75 / piece

Assembly, sales and service by phone: +49 4498 92 326 - 26 or by e-mail: shop@emission-partner.de



delivery time in days



recycling (page 123)

all prices plus VAT.

CATALYSTS FOR INSTALLATION IN THE EXHAUST PIPE



click here!



Article no.	Article name	Description	Dimension Ø	Price (incl. accessoires)
2873	EP-AL 304-120-2-2.1-BL400-DN150LF-Uni	universal catalytics for MAN HAGL 3268, 3262 and Dreyer & Bosse MAN 2848 and 2842 universal flange DN 150 PN6 / PN10 installation length / flange distance: 400 mm	310xL126 mm	€ 1,795.00 / piece
1917	EP-AL 254-90-2-2.1-BL300-DN100LF-Uni	universal catalytics for MAN HAGL 2876, 2848 (2 x), 2842 (2 x) and various CHP-manufacturers universal flange DN 80 / 100 PN6 / 10 / 16 installation length / flange distance: 300 mm incl. 2x Muffe M12	258xL96 mm	€ 995.00 / piece

Assembly, sales and service by phone: +49 4498 92 326 - 26 or by e-mail: shop@emission-partner.de



delivery time in days



recycling (page 123)

all prices plus VAT.

CATALYSTS FOR GEISBERGER ENGINES



click here!



Article no.	Article name	Description	Dimension	Price	Price (incl. accessoires)
959	EP-AL 254-120-2-GB	suitable for Geisberger 190 kW PowerMax catalytic disc with double cone	258xL126 mm	€ 1,395.00 / piece	€ 1,494.40 / piece
946	EP-AL 402-120-2-GB	suitable for Geisberger 550 kW PowerMax oxidation catalyst with double flange	406xL176 mm outer flange Ø: 477 mm	€ 2,545.00 / piece	€ 2,784.00 / piece
1207	EP-AL 514-90-2-2.1-GB	suitable for Geisberger 550 kW PowerMax catalytic disc with double flange	518xL96 mm outer flange Ø: 580 mm	€ 3,045.00 / piece	€ 3,327.00 / piece

Assembly, sales and service by phone: +49 4498 92 326 - 26 or by e-mail: shop@emission-partner.de



delivery time in days



recycling (page 123)

all prices plus VAT.

CATALYSTS FOR DQL CATALYTIC CHAMBERS



click here!



Article no.	Article name	Description	Dimension	Price	Price (incl. accessoires)
1033	EP-AL 216-90-2-2.1-DQL10	catalytic disc with flange ring	220xL96 mm outer flange Ø: 242 mm	€ 845.00 / piece	€ 924.85 / piece
1025	EP-AL 254-90-2-2.1-DQL12	catalytic disc with flange ring	258xL96 mm outer flange Ø: 580 mm	€ 1,045.00 / piece	€ 1,124.85 / piece
1024	EP-AL 288-90-2-2.1-DQL14	catalytic disc with flange ring	292xL96 mm outer flange Ø: 313 mm	€ 1,295.00 / piece	€ 1,374.85 / piece
1353	EP-AL 320-90-2-2.1-DQL15	catalytic disc with flange ring	324xL96 mm outer flange Ø: 346 mm	€ 1,595.00 / piece	€ 1,674.85 / piece
1034	EP-AL 362-90-2-2.1-DQL16	catalytic disc with flange ring	366xL96 mm outer flange Ø: 388 mm	€ 2,045.00 / piece	€ 2,124.85 / piece
1377	EP-AL 448-90-2-2.1-DQL18	catalytic disc with flange ring	452xL96 mm outer flange Ø: 474 mm	€ 2,945.00 / piece	€ 3,043.35 / piece

Assembly, sales and service by phone: +49 4498 92 326 - 26 or by e-mail: shop@emission-partner.de



delivery time in days



recycling (page 123)

all prices plus VAT.

SCHNELL

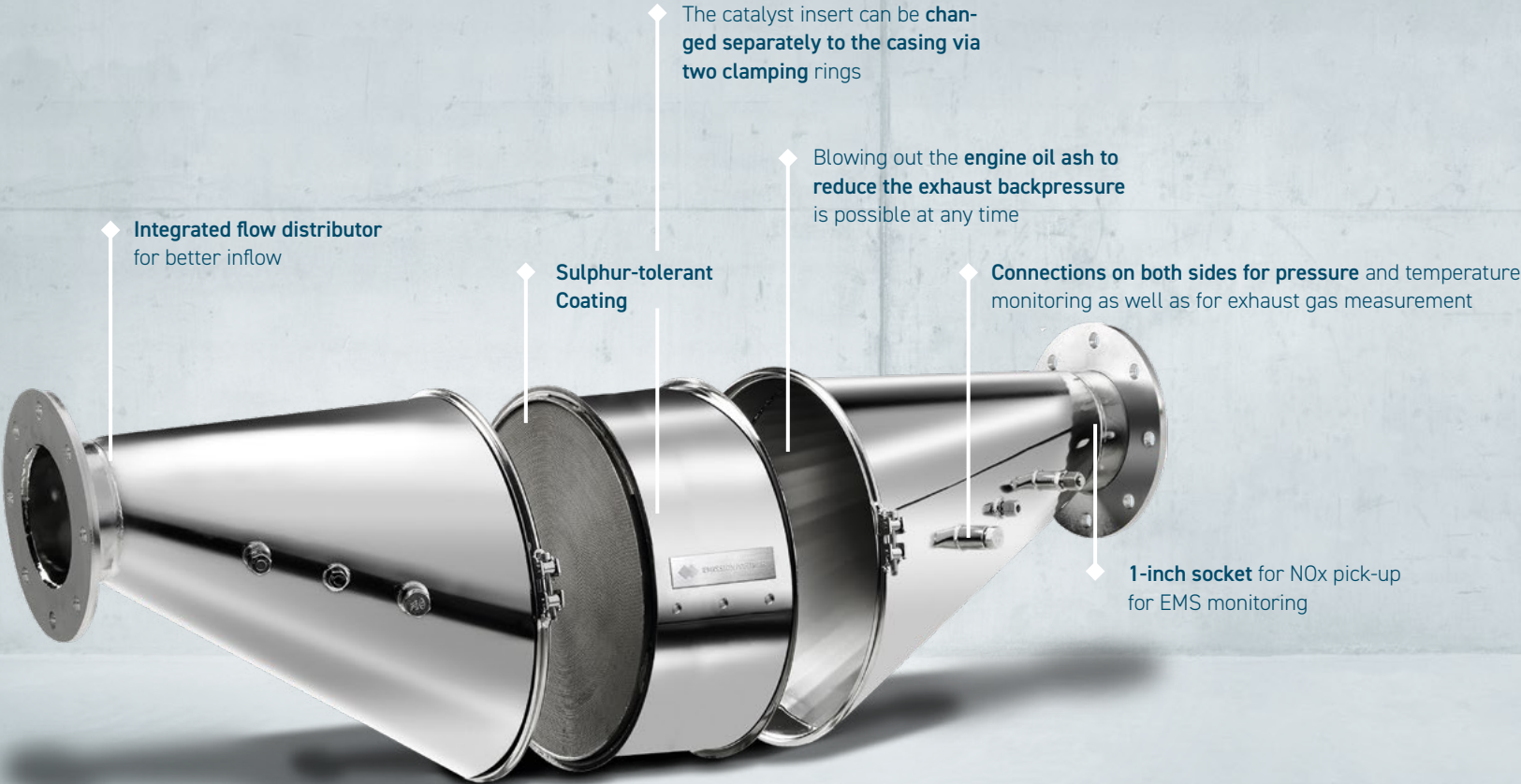
TABLE OF CONTENT

50	SCHNELL interchangeable systems
52	Insulation of interchangeable systems



SCHNELL INTERCHANGEABLE SYSTEMS

Schnell



Technologien und Services
für die dezentrale Energieerzeugung

INSULATION OF

SCHNELL interchangeable systems

Schnell



INSULATION
EP-IS SCHNELL

- ◆ multi-piece mattress insulation
- ◆ easy mounting
- ◆ suitable for all **SCHNELL** catalytics
- ◆ inclusive **winding wire**

INSULATION OF

SCHNELL interchangeable systems



click here!

Schnell



Article no.	Article name	Description	Price
294	EP-IS SCHNELL	1x middle part half; 2x cone half bottom; 2x cone half top; 2x flange insulations DN125; 1x stainless steel winding wire	€ 795.00 / piece

Assembly, sales and service by phone: +49 4498 92 326 - 26 or by e-mail: shop@emission-partner.de

 delivery time in days all prices plus VAT.



TBLE OF CONTENT

56	Catalyst Duo for all 2G Agenitor
58	Catalyst Duo for all 2G avus

CATALYST "DUO" FOR ALL 2G AGENITOR

for installation in exhaust gas heat exchanger

CATALYSTS

- EP-AL 254-90-2-2.0-AWT
- EP-AL 304-90-2-2.1-AWT
- EP-AL 333-90-2-2.1-AWT

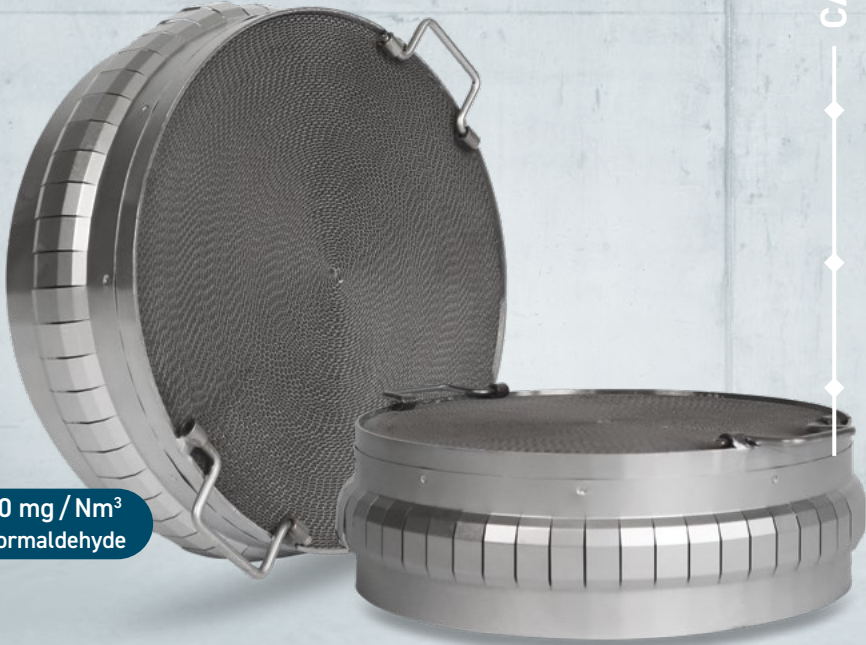
lamellae-spring brim for optimal sealing and reduction of exhaust slip

folding handles for safe mounting

use of 2 catalysts



20 mg / Nm³
Formaldehyde





click here to play
assembly video

CATALYST "DUO" FOR ALL 2G AVUS

for installation in catalyst chambers

20 mg / Nm³
Formaldehyde



CATALYSTS

- EP-AL 432-90-2-2.1-KP505
- EP-AL 486-90-2-2.1-KP555
- EP-AL 514-90-2-2.1-KP575
- EP-AL 544-90-2-2.1-KP625
- EP-AL 544-150-3-2.1-KP625

- handles for safe mounting
- use of 2 catalysts per catalyst chamber



click here to play
assembly video

CATALYSTS "DUO" FOR ALL 2G AGENITOR



click here!



Article no.	Article name	Description	Dimension Ø	Price	Price (incl. accessoires)
192	EP-AL 254-90-2-2.0-AWT	replaces 2G part no. 61014-06281 suitable for Agenitor 206, 306, 406, 312 (4x), KWK BG 190	258xL96 mm	€ 1,045.00 / piece	€ 1,239.75 / piece
986	EP-AL 304-90-2-2.1-AWT	replaces 2G part no. 61014-08136 suitable for Agenitor 208, 308, KWK BG 250, 370	308xL96 mm	€ 1,245.00 / piece	€ 1,472.75 / piece
987	EP-AL 333-90-2-2.1-AWT	replaces 2G part no. 61014-05996 suitable for Agenitor 212 and 408	337xL96 mm	€ 1,395.00 / piece	€ 1,677.75 / piece

Assembly, sales and service by phone: +49 4498 92 326 - 26 or by e-mail: shop@emission-partner.de



delivery time in days



recycling (page 123)

all prices plus VAT

CATALYSTS "DUO" FOR ALL 2G AVUS



click here!



Article no.	Article name	Description	Dimension Ø	Price	Price (incl. accessoires)
2609	EP-AL 432-90-2-2.1-KP505	replaces 2G part no. 52040-00204 use of 2 catalysts per chamber suitable for Jenbacher 312 and avus 500plus	436xL96 mm 505x505x5 mm	€ 2,345.00 / piece	€ 2,466.00 / piece
1042	EP-AL 486-90-2-2.1-KP555	replaces 2G part no. 52040-00371 use of 2 catalysts per chamber suitable for Jenbacher 312 and avus 500plus	490xL96 mm 555x555x5 mm	€ 2,695.00 / piece	€ 2,819.70 / piece
1030	EP-AL 514-90-2-2.1-KP575	replaces 2G part no. 52040-00227 use of 2 catalysts per chamber suitable for Jenbacher 312, MWM TCG 2016 V12	518xL96 mm 575x575x5 mm	€ 2,845.00 / piece	€ 2,973.40 / piece
960	EP-AL 544-90-2-2.1-KP625	replaces 2G part no. 52040-00358 use of 2 catalysts per chamber suitable for 2G avus 800, MWM TCG 2020 V12, MWM TCG 2020 V16 and Jenbacher 412	548xL96 mm 625x625x5 mm	€ 2,945.00 / piece	€ 3,077.10 / piece
1939	EP-AL 544-150-3-2.1-KP625	replaces 2G part no. 52040-00358 suitable for Jenbacher 412 Flexmotoren with 901 kW	548xL156 mm 625x625x5 mm	€ 5,495.00 / piece	€ 5,627.10 / piece

Assembly, sales and service by phone: +49 4498 92 326 - 26 or by e-mail: shop@emission-partner.de

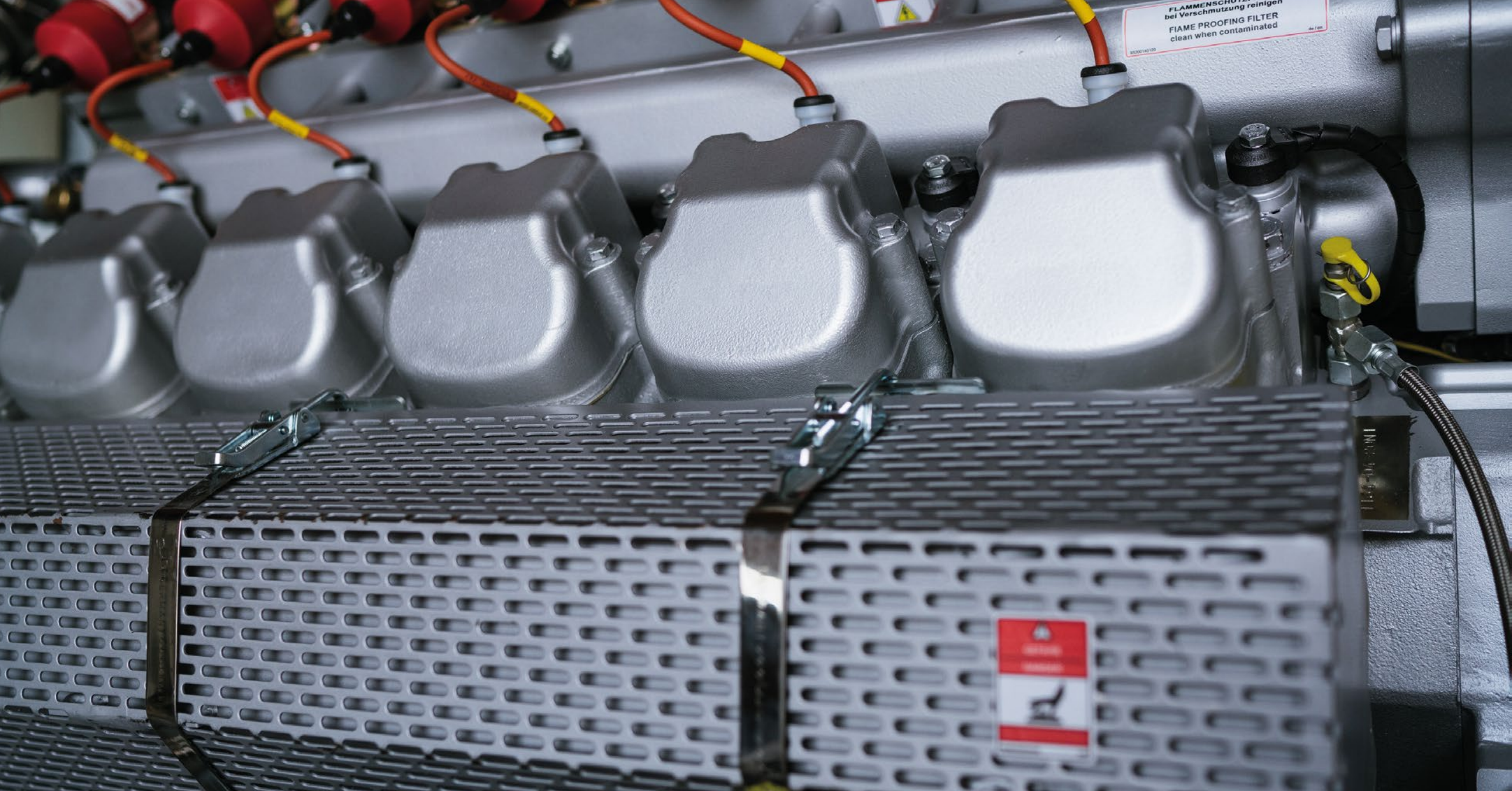


delivery time in days



recycling (page 123)

all prices plus VAT.



MTU / MDE

TABLE OF CONTENT

64	Catalysts for all MDE / MTU-Motoren
68	Universal catalytic exchange systems

MTU/MDE

CATALYSTS FOR ALL MDE / MTU-ENGINES

for installation in the pre-head of the flue gas heat
exchanger
...with gas conditioning

MTU/MDE



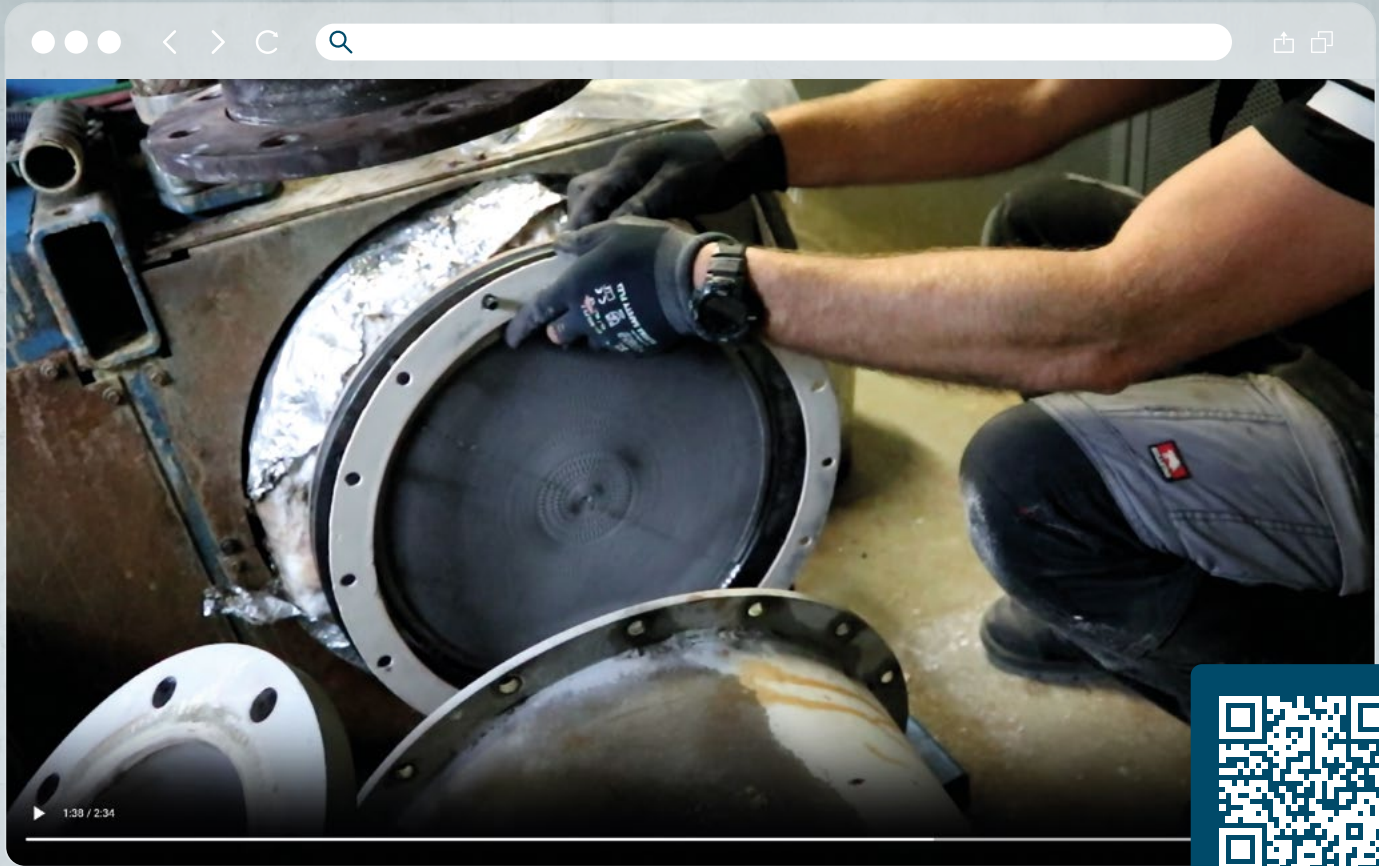
20 mg / Nm³
Formaldehyde



CATALYSTS

EP-AL 304-120-2-2.1-FL440-MDE3066
EP-AL 384-120-2-2.1-FL480-MDE3042

- ◆ inclusive accessoires
- ◆ version with **fixed flange**





click here to play
assembly video

MTU/MDE

CATALYSTS FOR ALL MDE / MTU-ENGINES

for installation in the prehead of the flue gas heat
exchanger

...without gas conditioning

MTU/MDE



20 mg / Nm³
Formaldehyde



CATALYSTS

EP-ALHS 304-240-2-2.1-FL440-MDE3066
EP-ALHS 384-240-2-2.1-FL480-MDE3042

◆ inclusive accessoires

◆ version with fixed flange

LEISTUNGSBEREICH 100-500 KW FÜR MTU UND MAN MOTOREN

**ZUVERLÄSSIGER,
SCHNELLER SERVICE FÜR
IHR BHKW – ZU FAIREN KONDITIONEN!**

Wartung

Austauschmotoren

Ersatzteile

Überholung/Reparatur

Abgas-/ Emissionsmessungen



Tel. +49 [0] 821 455 470-0 | www.mde-service.com



UNIVERSAL EMISSION PARTNER CATALYST EXCHANGE SYSTEMS

for all engine types up to 400 kW

MTU/MDE



CATALYSTS

- EP-AL 273-90-2-2.0-WS1
- EP-AL 304-120-2-2.1-WS2
- EP-AL 384-150-2-2.1-WS3

- ◆ catalyst insert for EP interchangeable systems
- ◆ sulphur tolerant coating



CHANGING SYSTEMS

- EP-WS1
- EP-WS2
- EP-WS3

- ◆ measuring connection for control or temperature monitoring
- ◆ variable installation length
- ◆ 2 clamping rings
- ◆ separate catalysts change

MTU/MDE

CATALYSTS FOR ALL MDE /MTU-ENGINES



click here!



Article no.	Article name	Description	Dimension Ø	Price	Price (incl. accessoires)
224	EP-AL 304-120-2-2.1-FL440-MDE3066	suitable for all MDE 3066 BHKW with gas treatment	308 x L126 mm	€ 2,795.00 / piece	€ 3,070.90 / piece
223	EP-AL 384-120-2-2.1-FL480-MDE3042	suitable for all MDE 3042 BHKW with gas treatment	388 x L126 mm	€ 3,545.00 / piece	€ 3,893.90 / piece
252	EP-ALHS 304-240-2-2.1-FL440-MDE3066	suitable for all MDE 3066 BHKW without gas treatment	308 x L252 mm	€ 3,545.00 / piece	€ 3,820.90 / piece
251	EP-ALHS 384-240-2-FL480-MDE3042	suitable for all MDE 3042 BHKW without gas treatment	388 x L252 mm	€ 4,295.00 / piece	€ 4,634.90 / piece

Assembly, sales and service by phone: +49 4498 92 326 - 26 or by e-mail: shop@emission-partner.de



delivery time in days



recycling (page 123)

all prices plus VAT

UNIVERSAL EMISSION PARTNER CATALYSTS EXCHANGE SYSTEMS

for all engine types up to 400 kW



click here!

Article no.	Article name	Description	Dimension Ø	Price	Price (incl. accessoires)
182	EP-AL 273-90-2-2.0-WS1	catalytic disc for interchangeable system 1 Art. no. 306	277 x L100 mm	€ 1,295.00 / piece	€ 1,442.20 / piece
306	EP-WS1	suitable for all engines up to 190 kWel connection flange dimension and total installation length freely selectable between DN100 - 150	283 mm	from € 500.00 / piece	-
198	EP-AL 304-120-2-2.1-WS2	catalytic disc for interchangeable system 2 Art. no. 309	308 x L126 mm	€ 2,455.00 / piece	€ 2,612.20 / piece
309	EP-WS2	suitable for all engines up to 250 kWel connection flange dimension and total installation length freely selectable between DN150 - 200	314 mm	from € 750.00 / piece	-
454	EP-AL 384-150-2-2.1-WS3	catalytic disc for interchangeable system 3 Art. no. 313	388 x L156 mm	€ 3,495.00 / piece	€ 3,670.76 / piece
313	EP-WS3	suitable for all engines up to 400 kWel connection flange dimension and total installation length freely selectable between DN125 - 250	397 mm	from € 1,150.00 / piece	-

Assembly, sales and service by phone: +49 4498 92 326 - 26 or by e-mail: shop@emission-partner.de

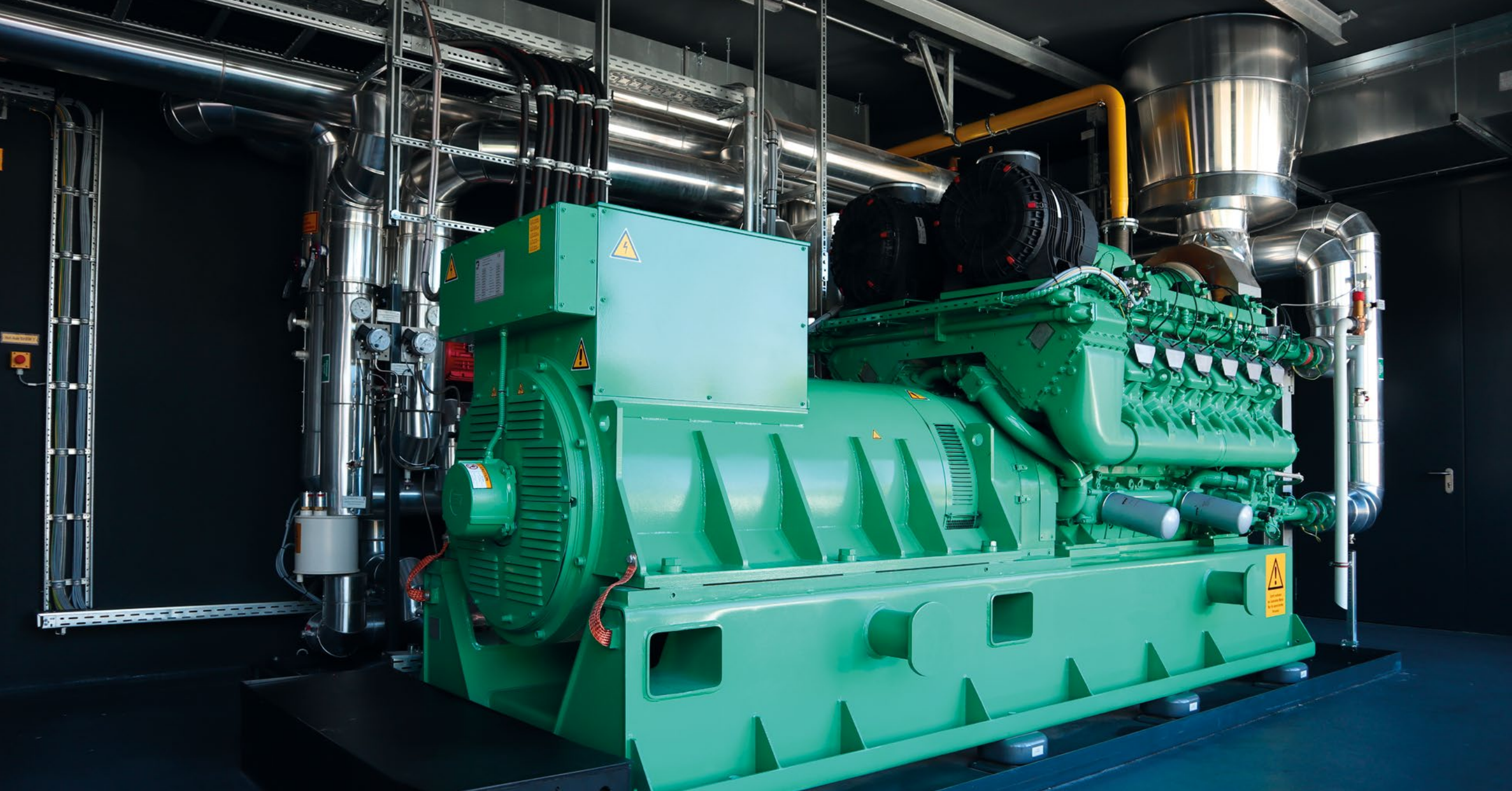


delivery time in days



recycling (page 123)

all prices plus VAT.



MWM

TABLE OF CONTENT

74	Catalysts for MWM-engines
77	Catalysts for catalytic chambers
78	Catalysts for SEVA Deutz engines
79	Catalyst chambers

MWM

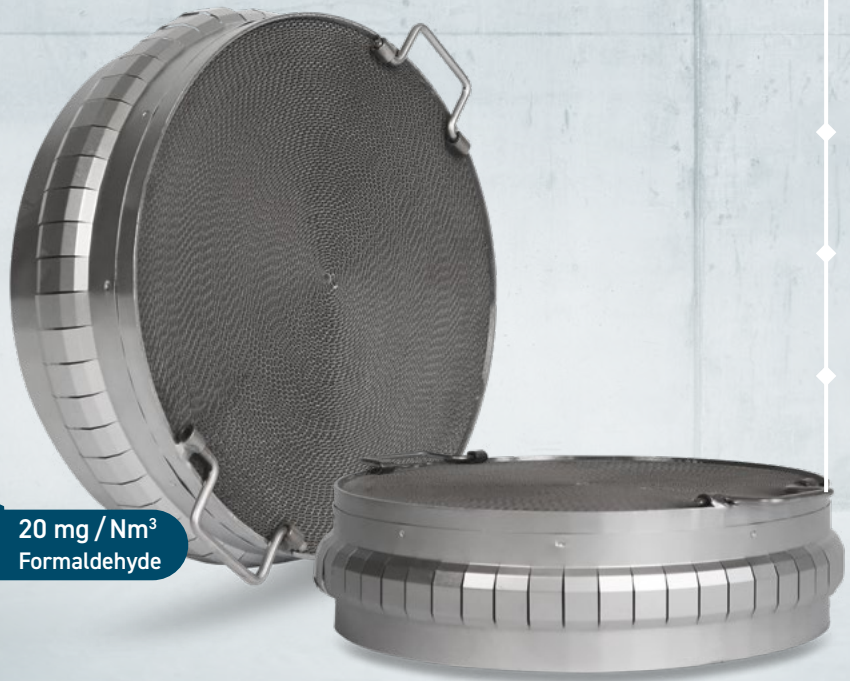
CATALYSTS FOR MWM-ENGINES

for installation in the flue gas
heat exchanger

MWM



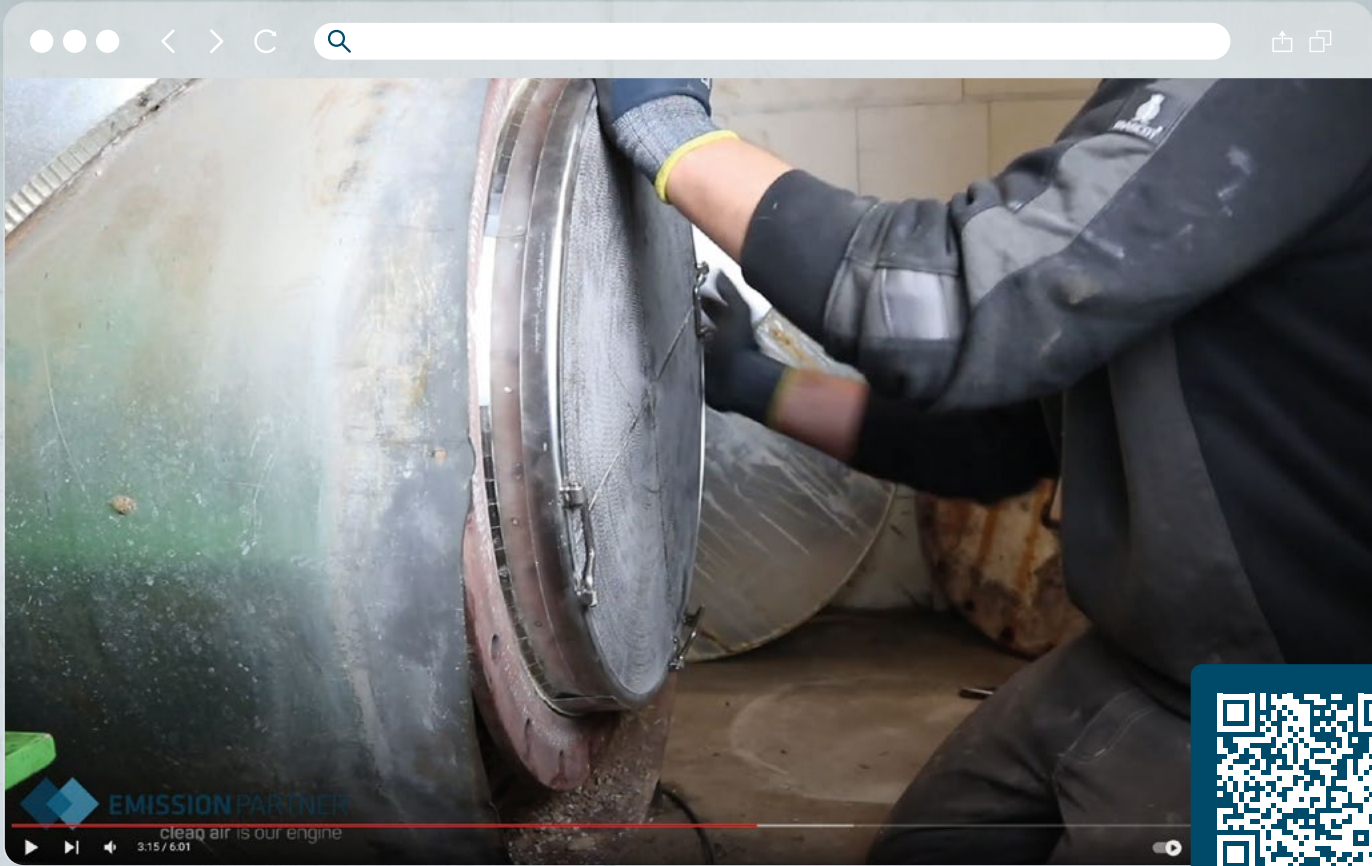
20 mg / Nm³
Formaldehyde



CATALYSTS

EP-AL 333-90-2-2.1-AWT
EP-AL 384-90-2-2.1-AWT
EP-AL 432-90-2-2.1-AWT

- ◆ **lamellae-spring brim** for optimal sealing and reduction of exhaust slip
- ◆ **folding handles** for safe mounting
- ◆ use of **2 catalysts**
- ◆ suitable for **MWM TCG 2012 V08/ V12/V16**



click here to play
assembly video

MWM

CATALYSTS FOR MWM-ENGINES

for installation in catalytic chambers

MWM



CATALYSTS

EP-AL 432-90-2-2.1-FL510
EP-AL 498-90-2-2.1-FL560

use of
2 catalysts

suitable for ETW catalytic
chambers

CATALYSTS FOR CATALYTIC CHAMBERS

from Emission Partner

MWM



CATALYSTS

EP-AL 514-90-2-2.1
EP-AL 514-120-2-2.1

use of
2 catalysts

individual use depending on
requirement



20 mg / Nm³
Formaldehyde

CATALYSTS FOR SEVA DEUTZ ENGINES

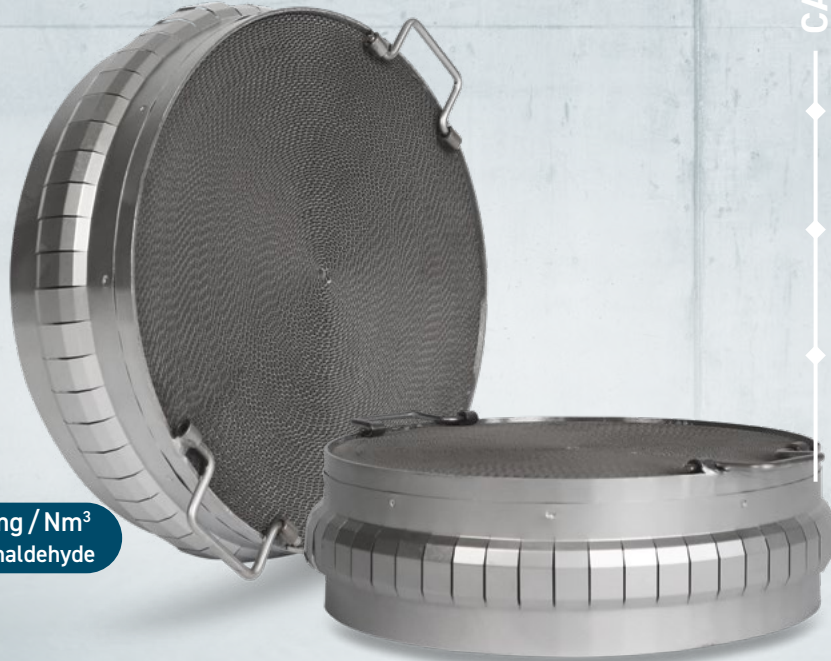
for installation in flue gas heat exchangers

CATALYSTS
EP-AL 199-120-2-2.0-AWT
EP-AL 254-150-2-2.0-AWT

- ◆ folding handles for safe mounting
- ◆ use of 2 catalytics
- ◆ suitable for SEVA/ DEUTZ BF8M and BF6M



20 mg / Nm³
Formaldehyde

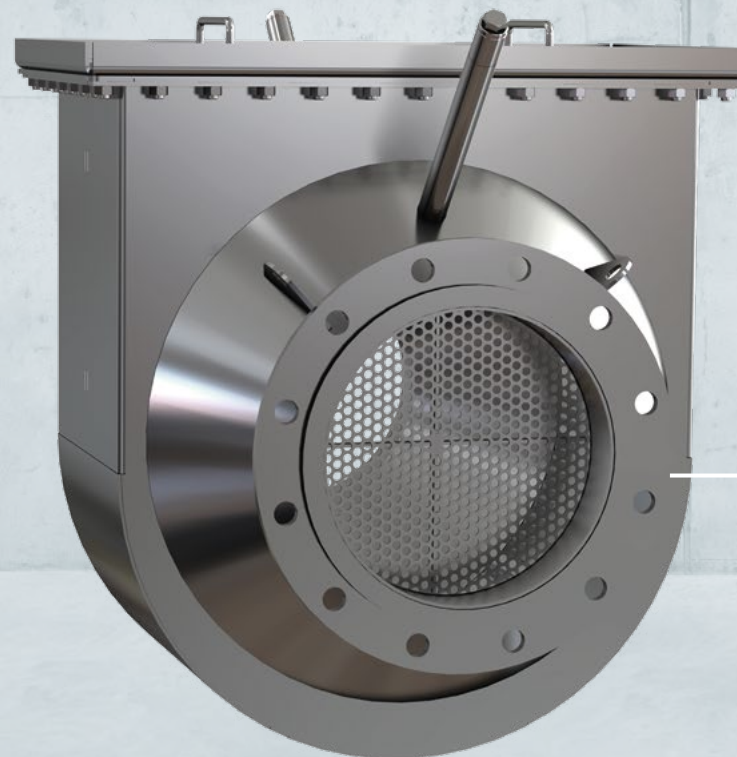


COMPACT CATALYST CHAMBERS

for all applications from
400 - 800 kW

CATALYTIC CHAMBERS
EP-KK1 EVO
BL660-DN250LF-FF

- ◆ minimum construction length 600 mm
- ◆ compact construction
- ◆ variable use depending on emission requirements



CATALYSTS FOR ALL MWM-ENGINES



click here!



Article no.	Article name	Description	Dimension Ø	Price	Price (incl. accessoires)
987	EP-AL 333-90-2-2.1-AWT	suitable for MWM TCG 2016 V08 and V12 Installation in heat exchanger DN 350	337xL96 mm	€ 1,395.00 / piece	€ 1,677.75 / piece
1143	EP-AL 384-90-2-2.1-AWT	suitable for MWM TCG 2016 V08 and V12 Installation in heat exchanger DN 400	388xL96 mm	€ 1,745.00 / piece	€ 2,037.75 / piece
2553	EP-AL 432-90-2-2.1-AWT	suitable for MWM TCG 2016 V12 and V16 Installation in heat exchanger DN 450	436xL96 mm	€ 2,245.00 / piece	€ 2,587.75 / piece

Assembly, sales and service by phone: +49 4498 92 326 - 26 or by e-mail: shop@emission-partner.de



delivery time in days



recycling (page 123)

all prices plus VAT

CATALYSTS FOR MWM ENGINES

for installation in catalytic chambers



click here!



Article no.	Article name	Description	Dimension Ø	Price	Price (incl. accessoires)
2658	EP-AL 432-90-2-2.1-FL510	suitable for TCG 2016 V08 ETW to insertion in small ETW catalytic chamber	436xL96 mm outer flange: 510 mm	€ 2,745.00 / piece	€ 2,934.75 / piece
233	EP-AL 498-90-2-2.1-FL560	suitable for TCG 2016 V12 ETW to insertion in middle ETW catalytic chamber	502xL96 mm outer flange: 560 mm	€ 3,295.00 / piece	€ 3,488.45 / piece

Assembly, sales and service by phone: +49 4498 92 326 - 26 or by e-mail: shop@emission-partner.de



delivery time in days



recycling (page 123)

all prices plus VAT.

CATALYSTS FOR CATALYTIC CHAMBERS

from Emission Partner



click here!



Article no.	Article name	Description	Dimension Ø	Price	Price (incl. accessoires)
208	EP-AL 514-90-2-2.1	catalytic disc for EP catalytic chambers suitable for Jenbacher 312, MWM TCG 2016 V12 from 600 to 830 kW	518xL96 mm	€ 3,195.00 / piece	€ 3,316.00 / piece
213	EP-AL 514-120-2-2.1	catalytic disc for EP catalytic chambers suitable for MWM TCG 2016 V08 engines from 400 to 600 kW	518xL126 mm	€ 4,195.00 / piece	€ 4,316.00 / piece

Assembly, sales and service by phone: +49 4498 92 326 - 26 or by e-mail: shop@emission-partner.de



delivery time in days



recycling (page 123)

all prices plus VAT

CATALYSTS FOR SEVA DEUTZ ENGINES

for installation in flue gas heat exchangers



click here!

Article no.	Article name	Description	Dimension Ø	Price	Price (incl. accessoires)
2191	EP-AL 199-120-2-2.0-AWT	suitable for SEVA Deutz BF6M 110 kw ignition spotlight Installation in heat exchanger DN 200	203xL126 mm	€ 1,245.00 / piece	€ 1,435.75 / piece
756	EP-AL 254-150-2-2.0-AWT	suitable for SEVA Deutz BF8M 240 kw ignition spotlight Installation in heat exchanger DN 250	258xL156 mm	€ 1,995.00 / piece	€ 2,189.75 / piece

Assembly, sales and service by phone: +49 4498 92 326 - 26 or by e-mail: shop@emission-partner.de



delivery time in days



recycling (page 123)

all prices plus VAT.

COMPACT CATALYTIC CHAMBERS

for all applications from 400-800 kW



[click here!](#)



Article no.	Article name	Description	Dimension	Price
4636	EP-KK1 evo BL660-DN250LF-FF	suitable for MWM TCG 2016 V12, Jenbacher 312 from 400 to 830 kW connection flange DN250	total length insertion chamber: 300 mm Minimum insertion length: 600 mm	€ 3,250.00 / piece
8585	mattress insulation for EP-KK1 evo BL660-DN250LF-FF	multi-part mattress insulation, silicone-coated outer fabric temperature resistance: 700 °C	-	€ 1,450.00 / piece

Assembly, sales and service by phone: +49 4498 92 326-26 or by e-mail: shop@emission-partner.de

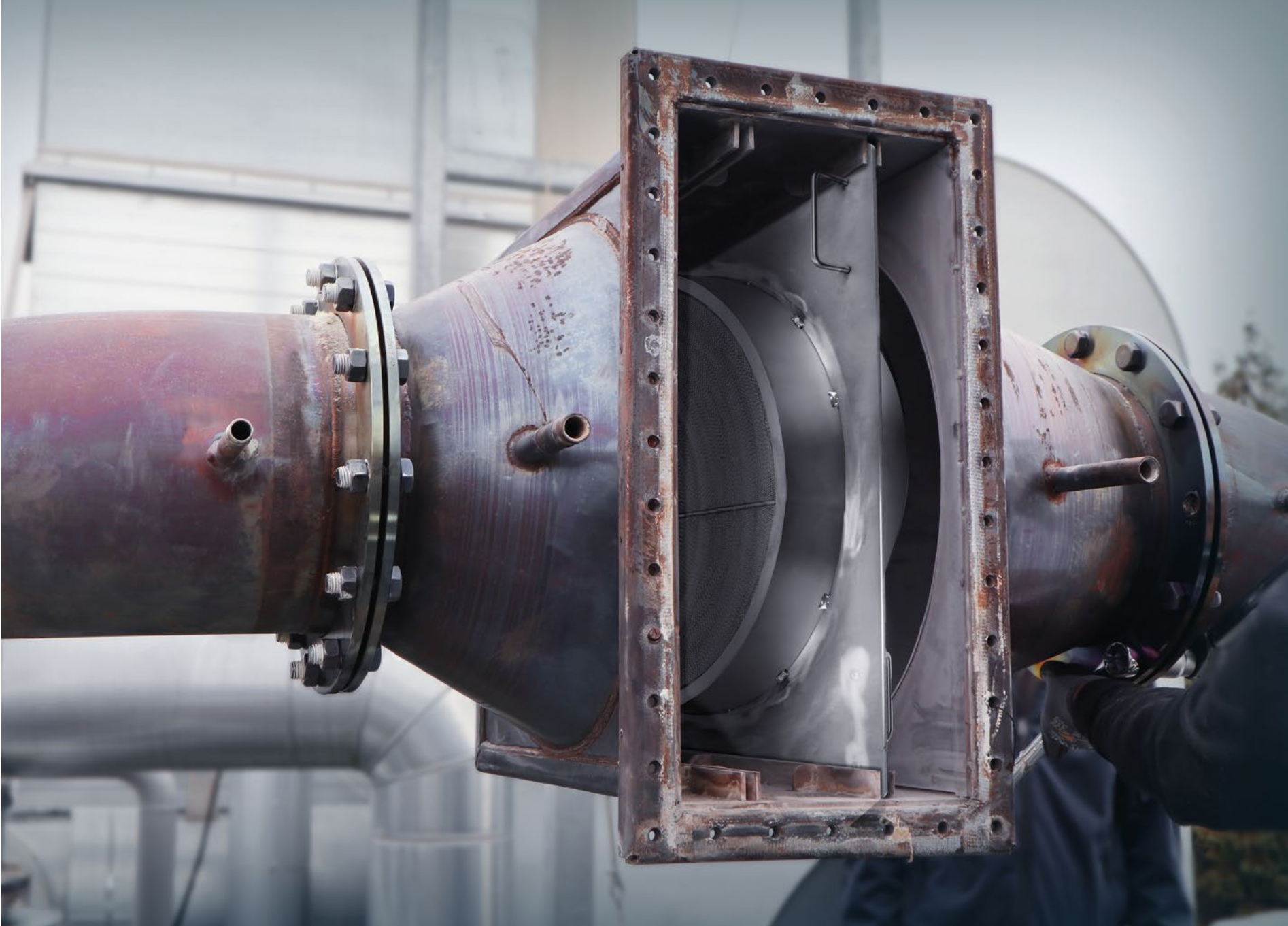


delivery time in days



recycling (page 123)

all prices plus VAT





JENBACHER

TABLE OF CONTENT

88	Catalysts for Jenbacher 312
90	Catalysts for Jenbacher engines
92	Catalysts and accessoires for Jenbacher 312

Jenbacher

CATALYSTS FOR JENBACHER 312

for installation over the inspection
cover of the flue gas heat exchanger



✓
20mg / Nm³
Formaldehyd

CATALYSTS

EP-AL 514-75-2-2.1-AWT

- ◆ **lamellae-spring brim** for optimal sealing and reduction of exhaust slip
- ◆ **folding handles** for safe mounting
- ◆ use of **2 catalysts** and **one empty sleeve**
- ◆ **inclusive** accessoires

CATALYSTS FOR JENBACHER 312

for installation in the access to the
Exhaust gas heat exchanger



CATALYSTS

EP-AL 496-120-3-2.1-
ME387-FL519-S

- ◆ installation in **antechamber** of the flue gas heat exchanger
- ◆ **inclusive** accessoires

CATALYSTS FOR JENBACHER ENGINES

for installation in exhaust gas heat exchangers and silencers



CATALYSTS

- EP-AL 544-90-2-2.1-FL680
- EP-AL 604-90-2-2.1-FL680
- EP-AL 514-120-2-2.1-FL680
- EP-AL 544-120-2-2.1-FL680
- EP-AL 604-120-2-2.1-FL680

variable use of catalysts

fastening via cotter pins

inclusive accessoires



click here!

Article no.	Article name	Description	Dimension	Price per piece	Price (inkl. accessoires)
1117	EP-AL 544-90-2-2.1-FL680	use of 2 catalysts at Jenbacher 316, 320, 412, 416 use of 3 catalysts at Jenbacher 612 replaces Jenbacher part no. 1219727	548xL96 mm outer flange Ø: 680 mm	€ 3,795.00 / piece	€ 3,854.40 / piece
1019	EP-AL 604-90-2-2.1-FL680	Einsatz von 1 Katalysator bei Jenbacher 312 Einsatz von 2 Katalysatoren bei Jenbacher 316, 412, 416, 420 Einsatz von 3 Katalysatoren bei Jenbacher 612, 616 replaces Jenbacher part no. 1227525	608xL96 mm outer flange Ø: 680 mm	€ 4,545.00 / piece	€ 4,604.40 / piece
216	EP-AL 514-120-2-2.1-FL680	suitable for Jenbacher 312 replaces Jenbacher part no. 1219896	518xL126 outer flange Ø: 680 mm	€ 4,545.00 / piece	€ 4,604.40 / piece
176	EP-AL 544-120-2-2.1-FL680	suitable for Jenbacher 312 replaces Jenbacher part no. 1219885	548xL126 mm outer flange Ø: 680 mm	€ 5,195.00 / piece	€ 5,254.40 / piece
180	EP-AL 604-120-2-2.1-FL680	suitable for Jenbacher 412 replaces Jenbacher part no. 1219891 & 1219894	608xL126 mm outer flange Ø: 680 mm	€ 5,495.00 / piece	€ 5,554.40 / piece

Assembly, sales and service by phone: +49 4498 92 326 - 26 or by e-mail: shop@emission-partner.de

5 delivery time in days

recycling (page 123)

all prices plus VAT.

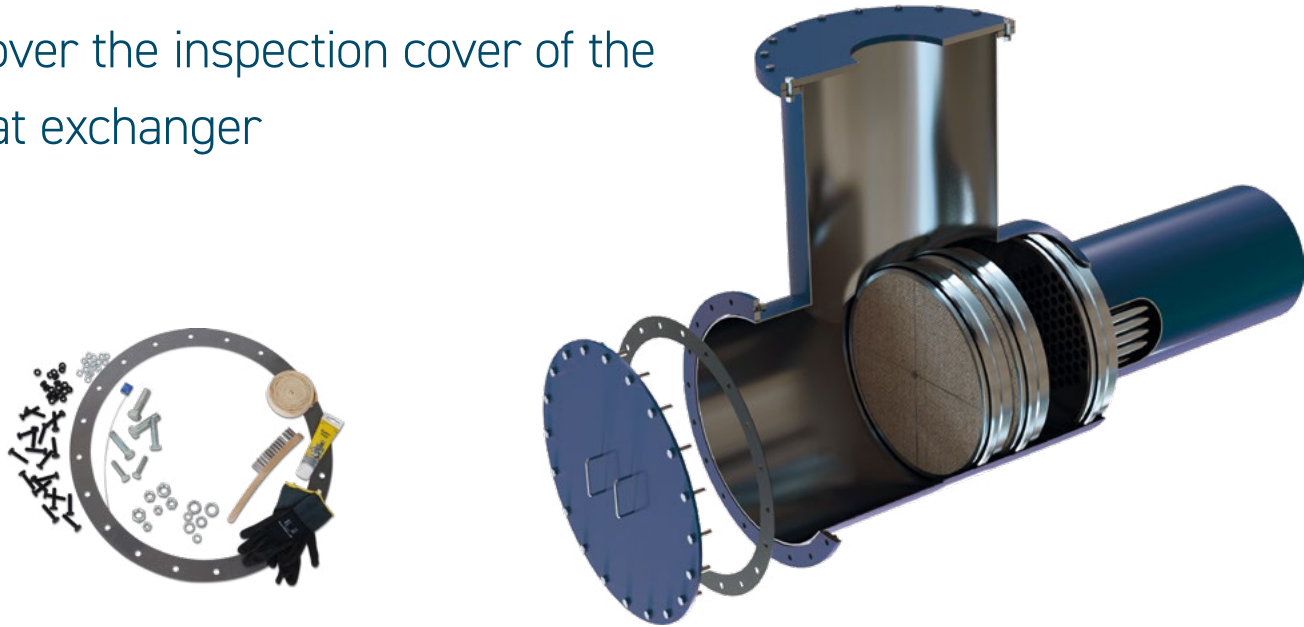
CATALYSTS AND ACCESSOIRES

JENBACHER 312

for installation over the inspection cover of the exhaust gas heat exchanger



click here!



Article no.	Article name	Description	Dimension Ø	Price per piece	price (incl. accessoires)
1496	EP-AL 514-75-2-2.1-AWT	standard catalytic converter for Jenbacher 312 catalytic converter with accessories consisting of flat gasket, sealing tape, heat-resistant screws, assembly set and seal set.	518xL81 mm	€ 2,245.00 / piece	€ 2,518.35 / piece

Assembly, sales and service by phone: +49 4498 92 326 - 26 or by e-mail: shop@emission-partner.de



delivery time in days



recycling (page 123)

all prices plus VAT

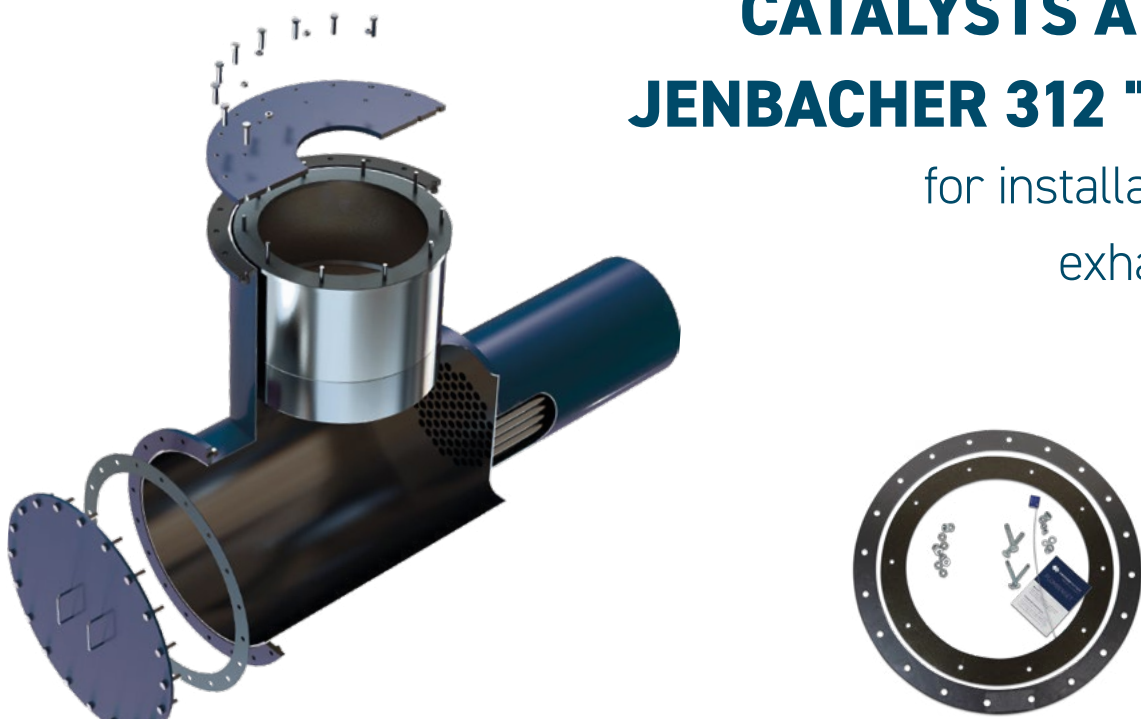
CATALYSTS AND ACCESSOIRES

JENBACHER 312 "MODEL ENVITEC"

for installation in the access to the exhaust gas heat exchanger



click here!



Article no.	Article name	Description	Dimension	Price (incl. accessoires)
2952	EP-AL 496-120-3-2.1-ME387-FL519-S incl. mounting kit	suitable for EnviTec Jenbacher with 525 - 633 kW prechamber Catalytic converter with accessories consisting of flat gasket, flange gasket, nuts, mounting set and seal set	500xL387 mm outer flange Ø: 519 mm	€ 3,245.00 / piece

Assembly, sales and service by phone: +49 4498 92 326 - 26 or by e-mail: shop@emission-partner.de



delivery time in days



recycling (page 123)

all prices plus VAT.

WE KEEP YOU UP TO DATE ON CURRENT TOPICS ON OUR ACCOUNTS.

We are now also present on Instagram. Follow us to make sure you don't miss any news.
Top offers, great promotions and exciting newsletters on the topic of exhaust aftertreatment await you.
Be there – it's going to be exciting!

 Emission Partner

 emissionpartner

 Emission Partner

 Emission Partner GmbH & Co. KG





ACCESSOIRES

TABLE OF CONTENT	
98	Filters
100	Flat gaskets
102	Seal kit
103	Clamping rings
104	Spark plugs
108	Screws
109	Other accessories

ACCESSOIRES

FILTERS



click here!



572



604



605

Article no.	Article name	Description	Dimension	Engine	Price per piece
572	Oil filter (6 + 8 cylinders)	replaces 2G part no. 51050-00028	Ø 80x215 mm	MAN, 2G	€ 9.95
573	Oil filter (12 cylinders)	replaces 2G part no. 51050-00029 replaces MTU part no. 93215250019	Ø 120x270 mm	MAN, 2G, MTU / MDE	€ 8.95
604	Gas filter incl. seal ring for 6 cylinders	replaces Dungs part no. 222689 replaces 2G part no. 51050-00012	125x145x40 mm	MAN, 2G	€ 14.95
605	Gas filter incl. seal ring for 8 cylinders	replaces 2G part no. 51050-00013	170x245 mm (Grid)	MAN, 2G, MTU / MDE	€ 19.95

Note: Values shown may vary. Current prices in the online shop: www.bhkwteile.de



5 delivery time in days

all prices plus VAT.

FILTERS



click here!



606



607



768



1074

Article no.	Article name	Description	Dimension	Engines	Price per piece
606	Gas filter incl. seal ring for 12 cylinder	replaces Dungs part no. 222694 replaces 2G part no. 51050-00014 replaces MTU part no. 2025080 and 2026080	180x310 mm (Grid)	MAN, 2G, MTU / MDE, MWM	€ 24.95
607	Gas filter SCHNELL incl. seal ring	OEM gas filter: 1-009-630 OEM seal ring: 1-009-631	230x116 mm (Grid)	SCHNELL	€ 14.95
768	Oil filter	replaces OEM 5105504-0122	Ø 113x202 mm	MAN	€ 8.99
1074	Conditioner UPF-CCV-15 Oil filter	original housing is cleaned, filter element renewed and reinserted, incl. deposit	-	MAN, SCHNELL, 2G	€ 269.50

Note: Values shown mav varv. Current prices in the online shoop: www.bhkwteile.de



5 delivery time in days

all prices plus VAT.

FLAT GASKETS



click here!



744



1105



1107

Article no.	Article name	Description	Dimension	Price per piece
744	Flat gasket UPF-CCV-15	replaces 2G part no. 61012-01153 2 piece per filter necessary	Ø 60 mm	€ 3.95
1105	Flat gasket DN100 PN6-10	-	Ø 152 / 115x2 mm; off FN900II	€ 14.95
1107	Flat gasket DN150 PN6-10	-	Ø 207 / 169x2 mm; off FN900II	€ 17.95
2643	Universal flat gasket DN200	Material thickness: 2 mm; LK Ø: 270 mm Boreholes: 12x Ø 12 mm	outer diameter: 300 mm	€ 37.95
2639	Universal flat gasket DN250	Material thickness: 2 mm; LK Ø: 325 mm Boreholes: 12x Ø 12 mm	outer diameter: 355 mm	€ 41.95
2640	Universal flat gasket DN300	Material thickness: 2 mm; LK Ø: 375 mm Boreholes: 12x Ø 12 mm	outer diameter: 405 mm	€ 74.95

Note: Values shown may vary. Current prices in the online shop: www.bhkwteile.de



5 delivery time in days

all prices plus VAT.

FLAT GASKETS



click here!



2642



2641



2638

Article no.	Article name	Description	Dimensions	Price per piece
2638	Universal flat gasket DN350	Material thickness: 2 mm; LK Ø: 410 mm Boreholes: 16 x Ø 12 mm	outer diameter: 440 mm	€ 99.95
2641	Universal flat gasket DN400	Material thickness: 2 mm; LK Ø: 460 mm Boreholes: 16 x Ø 12 mm	outer diameter: 490 mm	€ 109.95
2642	Universal flat gasket DN450	Material thickness: 2 mm; LK Ø: 510 mm Boreholes: 20 x Ø 12 mm	outer diameter: 540 mm	€ 119.95

Note: Values shown mav varv. Current prices in the online shoo: www.bhkwteile.de



5 delivery time in days

all prices plus VAT.

SEAL KIT

CLAMPING RINGS



click here!



1747



1745



1746

Article no.	Article name	Description	Price per piece
1747	Seal kit interchangeable system	2x wire rope seal 1.5 mm x 300 mm rope length	€ 9.95
1745	Seal kit M8 / M10	2 pcs. split pin bolts M8 and M10 in 50 mm length incl. 2 nuts & 2 spring washers each, wire seal 1.5 mm x 300 mm cable length, handout	€ 14.95
1746	Seal kit M12 / M16 / M20	2 pcs. split pin bolts M12 in 50 mm length, M16 and M20 in 60 mm length incl. 2 spring washers & 2 nuts each, wire rope seal 1.5 mm x 300 mm rope length, handout	€ 19.95

Note:

Values shown may vary. Current prices in the online shop: www.bhkwteile.de

Sealing of catalytic converters may only be carried out by certified specialist companies.

Info at www.verplombe.de



298

277

127

Article no.	Article name	Description	Price per piece
298	EP-283-71 clamping ring WS1	Dimensions: DN283 made of split strip 20 x 1.5 mm; Ø 279 mm consisting of: 2 x saddles in folded design type A5B in 1.4301; 1x quick lock with counter hook in 1.4301 incl. additional drillings for seals; 1x screws M8 & 60 incl. 2 mm drilling; 1x turning part Ø 8,5 in 1.4301; 1x turning part M8 in 1.4301	€ 54.90
277	EP-314-71 clamping ring WS2	Dimensions: DN314 made of split strip 20 x 1.5 mm; Ø 310 mm consisting of: 2 x saddles in folded design type A5B in 1.4301; 1x quick lock with counter hook in 1.4301 incl. additional drillings for seals; 1x screw M8 & 60 incl. 2 mm drilling; 1x turning part Ø 8,5 in 1.4301; 1x turning part M8 in 1.4301	€ 59.90
127	EP-397-71 clamping ring WS3	Dimensions: DN397 made of split strip 20 x 1.5 mm; Ø 390 mm consisting of: 2 x saddles in folded design type A5B in 1.4301; 1x quick lock with counter hook in 1.4301 incl. additional drillings for seals; 1x screw M8 & 60 incl. 2mm drilling; 1x turning part Ø 8,5 in 1.4301; 1x turning part m8 in 1.4301	€ 64.90

Note: Values shown mav varv. Current prices in the online shoo: www.bhkwteile.de

delivery time in days

all prices plus VAT.

SPARK PLUGS



click here!



162



505



564

Article no.	Article name	Description	Engine	Price per piece
162	Spark plug Denso GL3-5	for Agenitor engines with M18 head dimensions: M18 x 1.5 mm; SW 20.8 mm	MAN, 2G	€ 109.95
505	Spark plug Denso GL3-5 AA	for Agenitor engines with M18 head with shielding, twisted off dimensions: M18 x 1.5 mm; SW 20.8 mm	MAN, 2G	€ 142.90
564	Spark plug Denso GL3-5 AAS	for Agenitor motors with M18 head with shield and slot, turned down dimensions: M18 x 1.5 mm; SW 20.8 mm	Jenbacher	€ 147.90

Note: Values shown may vary. Current prices in the online shop: www.bhkwteile.de



5 delivery time in days

all prices plus VAT.



CONTACT US!

Our sales staff in Hanover and our area sales managers throughout Germany will be happy to provide you with individual advice!

YOU CAN REACH US:

Mon – Thu: 08:00 – 16:30

Fri: 08:00 – 15:00



[click here!](#)



+49 4498 92 326-26



info@emission-partner.de



www.emission-partner.de



www.bhkwteile.de



SCREWS



click here!



2835

Article no.	Article name	Description	Price per piece
2833	M10x45 bolt kit heat resistant AET DN200 / DN250 / DN300	12 x hexagon head screw M10 x 45 heat resistant according to DIN 933 in 1.7709 12 x matching spring washer M10 DIN 127 8.8 galvanised 12 x hexagon nut M10 ISO 4032 heat resistant acc. to DIN 934 in 1.7709	€ 109.95
2835	M10x45 bolt kit heat resistant AWT DN350 / DN400	16 x hexagon head screw M10 x 45 heat resistant according to DIN 933 in 1.7709 16 x matching spring washer M10 DIN 127 8.8 galvanised 16 x hexagon nut M10 ISO 4032 heat resistant acc. to DIN 934 in 1.7709	€ 139.95
2836	M10x45 bolt kit heat resistant AWT DN450	20 x hexagon head screw M10 x 45 heat resistant according to DIN 933 in 1.7709 20 x matching spring washer M19 DIN 127 8.8 galvanised 20 x hexagon nut M10 ISO 4032 heat resistant acc. to DIN 934 in 1.7709	€ 179.95
2837	M12x50 bolt kit heat resistant AWT JB312	20 x hexagon head screw M12 x 50 heat resistant according to DIN 933 in 1.7709 20 x matching spring washer M12 DIN 127 20 x hexagon nut M12 heat resistant according to DIN 934 in 1.7709	€ 149.00

Note: Values shown may vary. Current prices in the online shop: www.bhkweiteile.de



delivery time in days

all prices plus VAT.

OTHER ACCESSORIES



click here!



142

322

462

Article no.	Article name	Description	Price per piece
142	Ceramic paste EAP5 tube à 140 g	temperature stable up to 1000 °C	€ 12.50
322	Ceraband 14x4 mm	for sealing catalytic converters and catalytic converter housings. resistant up to max. 1200 °C	€ 4.50
331	Belt made of HT glass 6000 x 30 x 1.5 mm	for sealing catalyst chambers, self-adhesive on one side	€ 24.50
462	Sealing cord Ø 12 mm	lateral sealing of the catalytic converter in the housing	€ 14.95
906	Belt made of HT glass 2000x30 1,5 mm	for sealing catalyst chambers, self-adhesive on one side	€ 12.95
2792	Mounting kit	consisting of hand brush with steel wire, nylon assembly gloves (size 10), copper paste 100 g	€ 14.95
285	EP-IS for universal catalyst small	suitable for EP-AL 254-90-2-DN100-300	€ 480.00
584	EP-IS for universal catalyst large	suitable for EP-AL 304-120-2-DN150-400	€ 630.00
796	Activated carbon 500 kg BIG BAG	potassium iodide content 2.5 %	€ 2,350.00

Note: Values shown mav varv. Current prices in the online shoo: www.bhkweiteile.de



delivery time in days

all prices plus VAT.



EMISSION MEASUREMENT

TABLE OF CONTENT	
112	Emission measurement - preparation is everything!
116	Formaldehyde Quick Tester 2.0
118	EMI-LOG
122	Recycle your old catalysts

EMISSION MEASUREMENT - PREPARATION IS EVERYTHING!



The subject of annual emission measurement for proof of compliance with the emission parameters under licensing law, or in the biogas sector for obtaining the emission reduction bonus, has become significantly more complex in recent years. This is due, on the one hand, to the increased emission requirements under the 44th BImSchV, the LAI resolution and the now considerable testing and documentation obligations. In order to enable a smooth emission measurement process, engine operators should prepare the emission measurement professionally in the future in order to avoid a failed measurement and thus additional costs and effort.

On the other hand, the measurement intervals, predominantly from the sewage gas and special gas sectors, have tightened from a 3-year interval to an annual measurement. This is increasingly leading to a bottleneck in the measuring capacities of the accredited measuring institutes. Therefore, we can only recommend every operator to carry out the upcoming annual emission measurement as early as possible in the year and, at best, to secure the measurement capacity as well as the current price within the framework of a long-term contract.

Emission Partner is known for its fair pricing. The increased requirements as well as the associated effort of the measuring institutes in combination with the limited measuring capacity available leads to increasing prices for emission measurement. Unfortunately, we also have to pass on these price increases for emission measurements in 2024.

From the experience of 1,800 emission measurements carried out every year, we know what is important and have therefore created a service wreath for you for a successful emission measurement. You too can rely on our experience and thus ensure a successful emission measurement.

Matthias Wawra

Head of Sales / Authorised signatory
from Emission Partner GmbH & Co. KG



MEASURE FOR A SUCCESSFUL MEASUREMENT



CHP maintenance before
the measurement



Catalyst exchange before
measurement



Maintenance NO_x
monitoring and
SCR plant

**Successful
Emission measurement**



Complete documentation
on the measurement date



Pre-measurement catalytic
converter with
HCHO Quick tester 2.0

SECURE MEASUREMENT CAPACITY EARLY NOW



8514

Exhaust gas measurement 1st engine EEG

Further services only in connection with 054

€ 1,850,- /engine*

8515

Exhaust gas measurement adjacent engine EEG

< 25 m distance to 1st engine

€ 1,300,- /engine*

8516

Exhaust gas measurement satellite EEG

max. 10 km journey, incl. own measurement report

€ 1,500,- /engine*

Advice and order by phone: +49 4498 92 326 -26 or by e-mail: shop@emission-partner.de

all prices plus VAT / *in addition to individual fringe benefits



FORMALDEHYDE QUICK TESTER 2.0

maximum safety for annual emission measurement



6374 Formaldehyde Quick Tester 2.0
Formaldehyde measuring device in case incl.
◆ **Content:** Manual, sample probe with integrated pump, photometer with charger, flow meter, distilled water, accessories
€ 2,595,- / piece

delivery time in days all prices plus VAT.

THE FORMALDEHYDE QUICK TESTER:

- ◆ Measurement accuracy > 95 % compared to the accredited measurement
- ◆ cost savings through transparent catalysts change
- ◆ ideal for CHP service providers and major customers



Send an enquiry now to
Emission Partner!

[click here!](#)



EMISSION MONITORING MADE EASY - WITH EMI-LOG

modular – compact – reliable

In 2019, the 44th Ordinance of the Federal Immission Control (BImSchV) replaces the previously applicable TA Luft. The implementation of the applicable rules was again reviewed by the Federal/Länder Working Group on (LAI) on the basis of the VDMA standard sheet 6299 and applied to all installations that meet the plants that receive the emission reduction bonus, extended.

The EMI-LOG from Emission Partner has been available since 2019. It was launched on the market to offer you as an operator a simple, stable and functioning solution. With each additional requirement, such as the VDMA standard sheet 6299 and most recently the enforcement notice of the LAI, the system has been further developed and offers a tailor-made product for every application. An overview of this is shown in the table "EMI-LOG variants and their advantages".

The EMI-LOG is an engine manufacturer-independent and self-sufficient system. In particular, operators with engines from several manufacturers thus have a uniform monitoring system and thus less effort.

With all products, you always have the option of accessing your data online via the EMI-View customer portal. Encrypted and DSGVO-compliant, you have access to the current status and measured values of

your system. Individual warning, alarm and information messages keep you well informed at all times. This allows you to react at an early stage before an expensive an expensive breakdown.

The dual storage of the data, once on the SD card in the device and in the DSGVO-compliant cloud, gives you maximum security. All measured values and failure hours are forgery-proof and can be downloaded easily and clearly in the form of a monthly and annual report. This reduces the effort required for the annual plausibility check and avoids further costs.

From 01.01.2023, according to the LAI, all installations

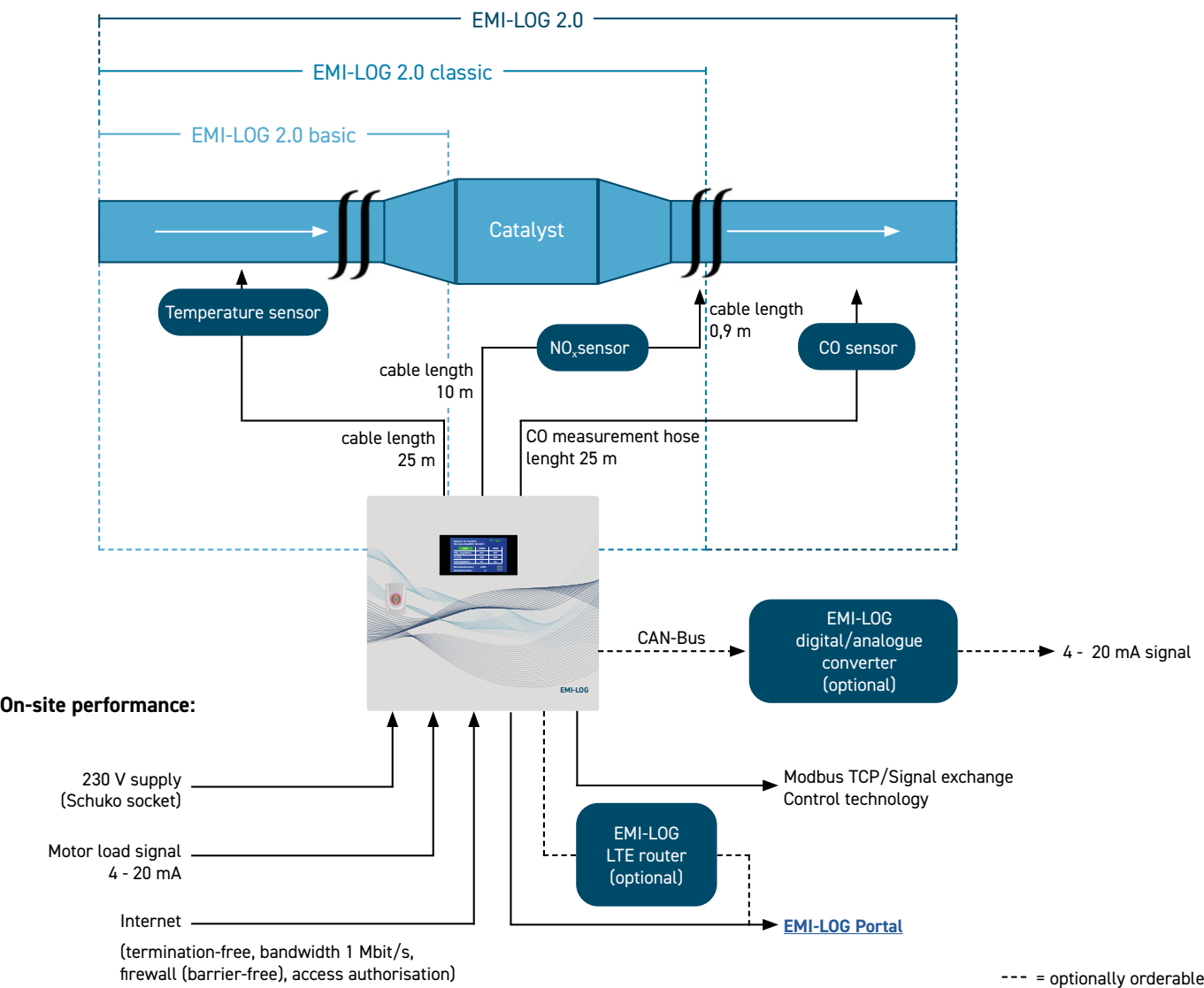
approved under building law that receive the emission reduction bonus must provide evidence of continuous recording of catalytic converter temperatures. The product for this application is the "EMI-LOG basic". Due to its modular design, it can be extended by a NOx or CO sensor at any time. This means that you are future adaptations in the best possible way.

You too can rely on our experience with more than 1,500 continuous monitoring systems in operation. A firmly established network of service partners is at your side for installation, operation and maintenance.

Further information:
www.katalysatorüberwachung.de

Features	EMI-LOG basic	EMI-LOG classic	EMI-LOG
NO _x sensor	optional upgradeable	✓	✓
Temperature sensor	✓	✓	✓
CO sensor	optional upgradeable	optional upgradeable	✓
Professional Installation / Commissioning*	X	X	X
Digital measurement report	optional add-on	optional add-on	optional add-on
Cloud data backup (DSGVO compliant)	✓	✓	✓

* Assembly and commissioning of the various versions of the EMI-LOG must be carried out by approved specialist personnel.



EMI-LOG 2.0

one product for all
(application-) cases



delivery time in days

all prices plus VAT

3568

EMI-LOG basic

For installations within the scope of application
according to building law (<1 MW FWL)

- ◆ **Temperature sensor:** Proof of the proper operation of your exhaust aftertreatment system

€ 2,200,- / piece

4178

EMI-LOG classic 2.0

For installations within the scope of the 44th
BImSchV (> 1 MW FWL)

- ◆ **Temperature sensor:** Proof of the proper operation of your exhaust aftertreatment system
- ◆ **NO_x sensor:** Continuous documentation of the Nitrogen oxide emissions of your CHP

€ 2,700,- / piece

4968

EMI-LOG 2.0

Complete emission monitoring with
CO monitoring

- ◆ **Temperature sensor:** Proof of the proper operation of your exhaust aftertreatment system
- ◆ **NO_x-Sensor:** Continuous documentation of the Nitrogen oxide emissions of your CHP
- ◆ **CO-Sensor:** Monitoring the function of the exhaust gas aftertreatment

€ 2,995,- / piece



FIND YOUR SERVICE PARTNER NEAR YOU!



click here!



Tamper-proof
data storage



Meets requirements
of the 44. BImSchV



Immediately available

RECYCLE YOUR OLD CATALYSTS NOW

WE REIMBURSE AT FIXED PRICES

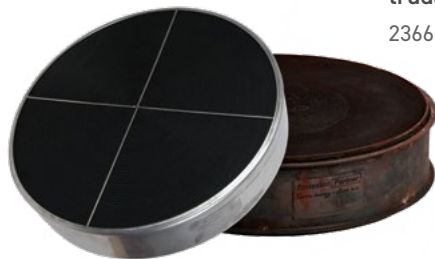
It is irrelevant to us whether your old catalytic converter is from another manufacturer or whether you have purchased a catalytic converter from our company. As we recycle the old catalytic converters, we recover a part of the precious metals used, which we use again for the production of our catalytic converters.

For shipping, please fill in the old catalytic converter recycling form. Recycling Form, enclose it with your package and send the catalytic converter to the following address:

Emission Partner GmbH & Co. KG
Altkatalysator-Recycling
Industriestraße 5
D-26683 Saterland-Ramsloh

TWC catalysts tempering
1375 - € 25.00 per liter*²

Disposal cost of SCR & ALHS catalysts and SC volute extrudates*¹
2366 + € 2.00 per liter



OXIDATION CATALYSTS*¹

Coat ø (in mm)	Art. no.	90	Art. no.	120	Art. no.	150
bis 258	3329	€ 75.00	3330	€ 100.00	3331	€ 125.00
259 bis 308	3332	€ 105.00	3333	€ 125.00	3334	€ 145.00
309 bis 388	3335	€ 135.00	3336	€ 175.00	3337	€ 215.00
389 bis 439	3338	€ 165.00	3339	€ 215.00	3340	€ 265.00
440 bis 490	3341	€ 205.00	3342	€ 265.00	3343	€ 325.00
491 bis 518	3344	€ 225.00	3345	€ 295.00	3346	€ 355.00
519 bis 614	3347	€ 305.00	3348	€ 395.00	3349	€ 485.00
615 bis 686	3351	€ 375.00	3352	€ 495.00	3353	€ 605.00
687 bis 744	3354	€ 435.00	3355	€ 575.00	3356	€ 710.00
745 bis 836	3357	€ 545.00	3358	€ 715.00	3359	€ 885.00
837 bis 886	3360	€ 615.00	3361	€ 805.00	3362	€ 1,005.00
887 bis 936	3363	€ 690.00	3364	€ 900.00	3365	€ 1,115.00
937 bis 986	3366	€ 750.00	3367	€ 995.00	3368	€ 1,235.00

valid from 01.11.2022

*¹ The calculation is made after receipt and inspection of the old catalytic converter at the factory. The calculation is based on the diameter and the matrix height. The credit note is net. No reimbursement of SC catalysts

ATTENTION: If there are no more precious metals in the catalyst, Emission Partner reserves the right not to pay out any remuneration.

*² The 25 EUR per litre is a guideline and the current rhodium and platinum prices must be taken into account.

EMISSIONPARTNER

100% (1/1)

Altkatalysator-Recycling

1. Ihre persönlichen Daten

Vor- & Nachname

Ihr Vor- & Nachname

Firma

Ihr Firmenname

Straße + Nr.

Ihre Straße und Hausnummer

Postleitzahl & Ort

Ihre Postleitzahl & Ort

E-Mail

Ihre E-Mail

2. USt-Id / Steuer-Nr.

☐ Firma

USt-Id / Steuer-Nr.

☐ Privatperson

You can find the **form** & the **shipping instructions** at:
emission-partner.de/recycling

click here!

CATALYSTS AND ACCESSORIES FOR YOUR CHP | 125

OUR TEAM FOR YOUR QUESTIONS



MATTHIAS WAWRA

Head of Sales / General Manager

+49 4498 92 326 - 207

matthias.wawra@emission-partner.de



SIEBO VAN LENGEN

Sales

east

+49 4498 92 326 - 250

siebo.vanlengen@emission-partner.de



MARCEL PETTAU

Sales

north west biogas

+49 4498 92 326 - 203

marcel.pettau@emission-partner.de



CHRISTIAN METZNER

Sales

north west special gas

+49 4498 92 326 - 259

christian.metzner@emission-partner.de



PETER BRAUN

Sales

south biogas

+49 4498 92 326 - 255

peter.braun@emission-partner.de



WILHELM STOCKEL

Sales south

special gas applications

+49 4498 92 326 - 252

wilhelm.stockel@emission-partner.de



ROGER SCHWESINGER

Sales for CHP manufacturers

and service providers

+49 4498 92 326 - 249

roger.schwesinger@emission-partner.de



ANDREA BERGMANN

Sales

Central

+49 4498 92 326 - 26

info@emission-partner.de

KEYWORD INDEX

A

Activated carbon 500 kg BIG BAG..... 109

B

Bolt kit M10x45 heat resistant AWT DN450 108
Bolt kit M12x50 heat resistant AWT JB312 108

C

Catalyst EP-AL 199-90-2-2.0-AWT.....44
Catalyst EP-AL 216-90-2-2.1-DQL10.....47
Catalyst EP-AL 254-90-2-2.1-BL300-DN100LF-Uni incl. matching accessories 45
Catalyser EP-AL 254-120-2-2.1-AWT.....44
Catalyst EP-AL 254-90-2-2.1-DQL12.....47
Catalyst EP-AL 254-120-2-GB.....46
Catalyst EP-AL 254-120-3-2.1-AWT.....44
Catalyst EP-AL 273-90-2-2.0-WS1.....71
Catalyst EP-AL 288-90-2-2.1-DQL14.....47
Catalyst EP-AL 304-90-2-2.1-AWT60
Catalyst EP-AL 304-120-2-2.1-AWT.....44
Catalyst EP-AL 304-120-2-2.1-BL400-DN150LF-Uni.....45
Catalyst EP-AL 304-120-2-2.1-FL440-MDE3066.....70
Catalyst EP-AL 304-120-2-2.1-WS2.....71
Catalyst EP-AL 311x311-90-2.....30
Catalyst EP-AL 320-90-2-2.1-DQL15.....47
Catalyst EP-AL 362-90-2-2.1-DQL16.....47
Catalyst EP-AL 384-120-2-2.1-FL480-MDE3042.....70
Catalyst EP-AL 384-150-2-2.1-WS3.....71
Catalyst EP-AL 402-120-2-GB.....46
Catalyst EP-AL 432-90-2-2-2.1-AWT80
Catalyst EP-AL 432-90-2-2.1-KP50561
Catalyst EP-AL 432-90-2-2.1-FL510.....81

Catalyst EP-AL 448-90-2-2.1-DQL18.....47
Catalyst EP-AL 486-90-2-2.1-KP555.....61
Catalyst EP-AL 496-120-3-2.1-ME387-FL519-S incl. mounting kit.....93
Catalyst EP-AL 498-90-2-2.1-FL560.....81
Catalyst EP-AL 514-90-2-2.182
Catalyst EP-AL 514-90-2-2.1-GB.....46
Catalyst EP-AL 514-90-2-2.1-KP575.....61
Catalyst EP-AL 514-120-2-2.182
Catalyser EP-AL 514-120-2-2.1-FL680.....91
Catalyst EP-AL 544-90-2-2.1-KP625.....61
Catalyser EP-AL 544-120-2-2.1-FL68091
Catalyst EP-AL 604-90-2-2.1-FL680.....91
Catalyst EP-ALS 311x311-90-2.....30
Catalyst EP-ALHS 304-240-2-2.1-FL440-MDE306670
Catalyst EP-ALHS 384-240-2-FL480-MDE3042.....70
Catalyst EP-ASC 2x2 150x150-300/50x50-KK-100.....31
Catalyst EP-SCR 2x2 150x150-300/50x50-KK.....31
Catalyst EP-SCR 311x311-90-2.....30
Catalyst EP-AL 199-120-2-2.1-AWT.....83
Catalyst EP-AL 254-90-2-2.0-AWT56
Catalyst EP-AL 254-150-2-2.0-AWT.....78
Catalyst EP-AL 333-90-2-2.1-AWT.....60,80
Catalyst EP-AL 384-90-2-2.1-AWT.....80
Catalyst EP-AL 514-75-2-2.1-AWT92
Catalyst EP-AL 544-150-3-2.1-KP62561
Catalyst EP-AL 604-120-2-2.1-FL68091
Ceraband 14 x 4 mm..... 109
Ceramic past EAP5 tube à 140 g..... 109
Clamping ring EP-283-71 WS1103
Clamping ring EP-314-71 WS2.....103
Clamping ring EP-397-71 WS3 1-065-458.....45

E

EMI-LOG (basic/classic) - Continuous monitoring..... 120
EP-IS for universal cat large 109
EP-IS for universal cat small..... 109
EP-KK1 evo BL660-DN250LF-FF..... 84
Exhaust gas measurement 1st engine EEG.....114
Exhaust measurement neighbouring engine EEG.....114
Exhaust gas measurement satellite EEG.....114

F

Flat gasket 300-221-2 LK270-12xØ12 DN200 AWT 100
Flat gasket 355-275-2 LK325-12xØ12 DN250 AWT 100
Flat gasket 405-325-2 LK375-12xØ12 DN300 AWT..... 100
Flat gasket 440-357-2 LK410-16xØ12 DN350 AWT..... 101
Flat gasket 490-408-2 LK460-16xØ12 DN400 AWT..... 101
Flat gasket 540-459-2 LK510-20xØ12 DN450 AWT..... 101
Flat gasket DN100 PN6-10..... 100
Flat gasket DN150 PN6-10..... 100
Flat gasket for UPF-CCV-15 100

G

Gas filter incl. sealing ring - 6 cylinders..... 98
Gas filter incl. sealing ring - 8 cylinders..... 98
Gas filter incl. sealing ring - 12 cylinders 99
Gas filter SCHNELL incl. sealing ring..... 99

H

HT glass band 109

I

Insulation EP-IS SCHNELL..... 53

Interchangeable system EP-WS171
Interchangeable system EP-WS2.....71
Interchangeable system EP-WS3.....71

M

Mounting kit..... 109

O

Oil filter (Art. no. 768)..... 99
Oil filter 12 cylinder (Art. no. 573)..... 98
Oil filter 6 and 8 cylinder (Art. no. 572)..... 98

R

Recycled UPF-CCV-15 for Agenitor 206/306/212 99

S

Screw pack M10x45 heat resistant AWT DN200/DN250/DN300.....108
Screw pack M10x45 heat resistant AWT DN350/DN400..... 108
Screw pack M10x45 heat resistant AWT DN450 108
Screw pack M12x50 heat resistant AWT JB312 108
Sealing cord..... 109
Seal kit M8/M10..... 102
Seal kit M12/M16/M20 102
Seal kit interchangeable system 102
Spark plug Denso GL3-5.....104
Spark plug Denso GL3-5 AA.....104
Spark plug Denso GL3-5 AAS..... 104

W

Waste catalyst recycling..... 123



EMISSION PARTNER
clean air is our engine

SECURE YOUR EMISSION PARTNER VEST

At the Biogas Convention in Nuremberg from
December 12-14 in Hall 08 at Stand D18



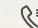
Only one vest per person and only while stocks last.

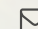
Emission Partner is a member of
in/with:

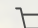


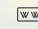
IG Biogasmotoren 

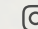
The catalog prices quoted are recommended retail prices. Offers are subject to change, prices are subject to VAT (with the exception of the reimbursement of used catalytic converters), delivery ex works, subject to prior sale.
You can always find our current sales prices in our online store www.bhkwteile.de

 +49 4498 92 326-26

 info@emission-partner.de

 www.bhkwteile.de

 www.emission-partner.de

 [@emissionpartner](https://www.instagram.com/emissionpartner)

YOUR BENEFITS WITH EMISSION PARTNER:



SAFETY IN EXHAUST GAS MEASUREMENT

Comply with the required limit values.



SHORT DELIVERY TIME

Receive your desired product within a very short time.



FAIR PRICES

The price-performance ratio fits.



MANUFACTURER INDEPENDENT

For every engine the right accessories.

SALES

Emission Partner GmbH & Co. KG
Karl-Wiechert-Allee 66
Germany - 30625 Hannover

Phone: +49 4498 92 326 – 26
Fax: +49 4498 92 326 – 112

PRODUCTION

Emission Partner GmbH & Co. KG
Industriestraße 5
Germany - 26683 Saterland-Ramsloh

Phone: +49 4498 92 326 – 0
Fax: +49 4498 92 326 – 112

SERVICE

Emission Partner Service GmbH
Industriestraße 5
Germany - 26683 Saterland-Ramsloh

Phone: +49 4498 92 326 – 111
Fax: +49 4498 92 326 – 112

www.emission-partner.de



EMISSION PARTNER
clean air is our engine